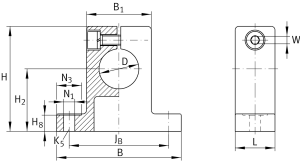
**GW25**

Shaft block

Shaft block

## Technical information

**Your current product variant**

Size Code 25

**Main Dimensions & Performance Data**

D	25 mm	Diameter
B	74 mm	Width
L	25 mm	Length
H	58 mm	Height
≈m	0,26 kg	Weight

**Mounting dimensions**

J <sub>B</sub>	60 mm	Mounting Dimension
Tol J <sub>B</sub>	+ 0,15 mm	Upper tolerance
Tol J <sub>B</sub>	- 0,15 mm	Lower tolerance
B <sub>1</sub>	38 mm	Mounting Dimension
H <sub>2</sub>	35 mm	Mounting Dimension
Tol H <sub>2</sub>	+ 0,15 mm	Upper tolerance
Tol H <sub>2</sub>	- 0,15 mm	Lower tolerance
H <sub>8</sub>	8,5 mm	Mounting Dimension
N <sub>1</sub>	5,5 mm	Mounting Dimension
N <sub>3</sub>	11 mm	Mounting Dimension
K <sub>5</sub>	M5	Size thread fixing screws above
W	4 mm	Width Across Flat