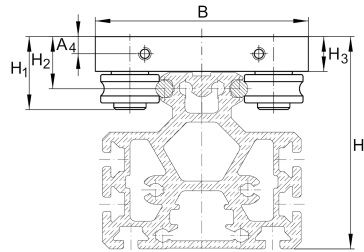
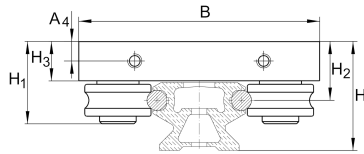


### LFL52-SF

#### Carriage

open carriage, standard design, clearance-free

## Technical information

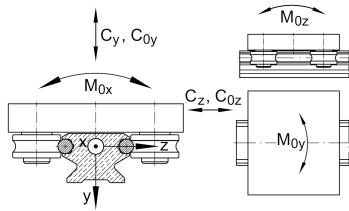
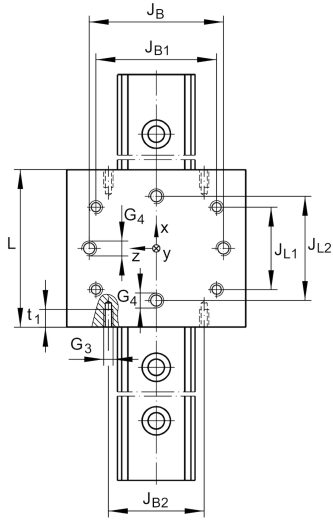
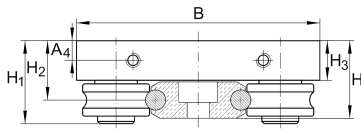


### Your current product variant

Size code	52
Setting	SF Clearance-free

### Main Dimensions & Performance Data

H <sub>1</sub>	43,2 mm
B	120 mm
L	100 mm
≈m	1,006 kg Weight



### Mounting dimensions

A <sub>4</sub>	9,75 mm	
G <sub>3</sub>	M6	
G <sub>4</sub>	M10	
H	54,3 mm	Total height of carriage and rail at LFS, -C, -CE, -CEE, -E, -EE, -N, -NZZ
H	38,2 mm	Total height of carriage and rail at LFS..-F, -FE
H	118,9 mm	Total height of carriage and rail at LFS..-M
H <sub>2</sub>	29,2 mm	
H <sub>2</sub> Tol	0,3	
H <sub>2</sub> Tol	0	
H <sub>3</sub>	19,5 mm	
J <sub>B</sub>	59 mm	
J <sub>B</sub> Tol	0,2	
J <sub>B</sub> Tol	-0,2	
J <sub>B1</sub>	83,2 mm	
J <sub>B2</sub>	65 mm	
J <sub>L1</sub>	60 mm	
J <sub>L2</sub>	70 mm	
J <sub>L2</sub> Tol	0,2	
J <sub>L2</sub> Tol	-0,2	
t <sub>1</sub>	12 mm	



### Main dimensions

$M_A$	40 Nm	Tightening torque (standard version)
$M_A$	23 Nm	Tightening torque (corrosion-resistant version)
$C_y$	10.000 N	Basic dynamic load rating in y-direction
$C_{0y}$	5.200 N	Basic static load rating in y-direction
$C_z$	16.800 N	Basic dynamic load rating in z-direction
$C_{0z}$	10.000 N	Basic static load rating in z-direction
$M_{0x}$	110 Nm	Static moment about X-axis
$M_{0y}$	290 Nm	Static moment about Y-axis
$M_{0z}$	150 Nm	Static moment about Z-axis

### Related products

LFR	LFRI5201-10-2Z	Used track roller
LFS	LFS52	Guide rail