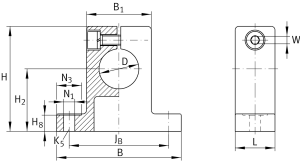


**GW16**

Shaft block

Shaft block

## Technical information

**Your current product variant**

Size code 16

**Main Dimensions & Performance Data**

|    |       |          |
|----|-------|----------|
| D  | 16 mm | Diameter |
| B  | 50 mm | Width    |
| L  | 16 mm | Length   |
| H  | 42 mm | Height   |
| ≈m | 80 g  | Weight   |

**Mounting dimensions**

|                    |           |                                 |
|--------------------|-----------|---------------------------------|
| J <sub>B</sub>     | 40 mm     | Mounting Dimension              |
| Tol J <sub>B</sub> | + 0,15 mm | Upper tolerance                 |
| Tol J <sub>B</sub> | - 0,15 mm | Lower tolerance                 |
| B <sub>1</sub>     | 26 mm     | Mounting Dimension              |
| H <sub>2</sub>     | 25 mm     | Mounting Dimension              |
| Tol H <sub>2</sub> | + 0,15 mm | Upper tolerance                 |
| Tol H <sub>2</sub> | - 0,15 mm | Lower tolerance                 |
| H <sub>8</sub>     | 6,5 mm    | Mounting Dimension              |
| N <sub>1</sub>     | 4,5 mm    | Mounting Dimension              |
| N <sub>3</sub>     | 10 mm     | Mounting Dimension              |
| K <sub>5</sub>     | M4        | Size thread fixing screws above |
| W                  | 3 mm      | Width Across Flat               |