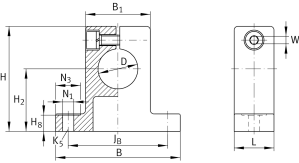


**GW30**

Shaft block

Shaft block

## Technical information

**Your current product variant**

Size code 30

**Main Dimensions & Performance Data**

D	30 mm	Diameter
B	84 mm	Width
L	28 mm	Length
H	68 mm	Height
≈m	0,38 kg	Weight

**Mounting dimensions**

J <sub>B</sub>	68 mm	Mounting Dimension
Tol J <sub>B</sub>	+ 0,2 mm	Upper tolerance
Tol J <sub>B</sub>	- 0,2 mm	Lower tolerance
B <sub>1</sub>	45 mm	Mounting Dimension
H <sub>2</sub>	40 mm	Mounting Dimension
Tol H <sub>2</sub>	+ 0,15 mm	Upper tolerance
Tol H <sub>2</sub>	- 0,15 mm	Lower tolerance
H <sub>8</sub>	9,5 mm	Mounting Dimension
N <sub>1</sub>	6,6 mm	Mounting Dimension
N <sub>3</sub>	13 mm	Mounting Dimension
K <sub>5</sub>	M6	Size thread fixing screws above
W	5 mm	Width Across Flat