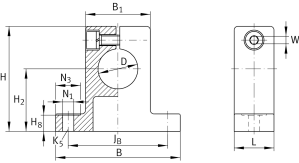


**GW12**

Shaft block

Shaft block

Technical information

**Your current product variant**

Size code 12

Main Dimensions & Performance Data

D	12 mm	Diameter
B	42 mm	Width
L	12 mm	Length
H	35 mm	Height
≈m	40 g	Weight

Mounting dimensions

J _B	32 mm	Mounting Dimension
Tol J _B	+ 0,15 mm	Upper tolerance
Tol J _B	- 0,15 mm	Lower tolerance
B ₁	20 mm	Mounting Dimension
H ₂	20 mm	Mounting Dimension
Tol H ₂	+ 0,15 mm	Upper tolerance
Tol H ₂	- 0,15 mm	Lower tolerance
H ₈	5,5 mm	Mounting Dimension
N ₁	4,5 mm	Mounting Dimension
N ₃	10 mm	Mounting Dimension
K ₅	M4	Size thread fixing screws above
W	3 mm	Width Across Flat