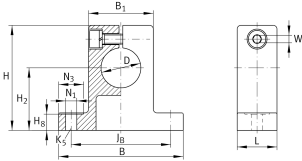
**GWA20**   
Shaft block

## Technical information

**Your current product variant**

Size code 20

**Main Dimensions & Performance Data**

D	20 mm	Diameter
B	60 mm	Width
L	20 mm	Length
H	50 mm	Height
≈m	0,15 kg	Weight

**Mounting dimensions**

J <sub>B</sub>	45 mm	Mounting Dimension
Tol J <sub>B</sub>	+ 0,15 mm	Upper tolerance
Tol J <sub>B</sub>	- 0,15 mm	Lower tolerance
B <sub>1</sub>	32 mm	Mounting Dimension
H <sub>2</sub>	30 mm	Mounting Dimension
Tol H <sub>2</sub>	+ 0,15 mm	Upper tolerance
Tol H <sub>2</sub>	- 0,15 mm	Lower Tolerance
H <sub>8</sub>	7,5 mm	Mounting Dimension
N <sub>1</sub>	5,5 mm	Mounting Dimension
N <sub>3</sub>	11 mm	Mounting Dimension
K <sub>5</sub>	M5	Size thread fixing screws above
W	3 mm	Width across flats