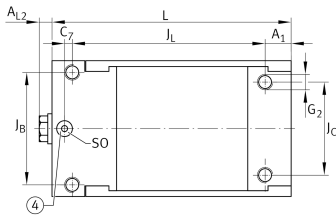
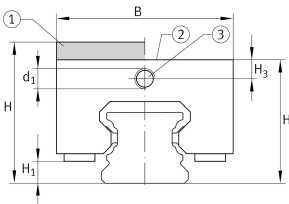
**BKE.TKVD35** [↗](#)

Braking/clamping element

Braking and clamping element BKE.TKVD..., hydraulic connector on end face, for four-row linear recirculating ball bearing and guideway assembly

Technical information



Your current product variant

Size code	35
-----------	----

Main Dimensions & Performance Data

H	48 mm	Height system
	without	Adapter plate
B	69 mm	Width of braking and clamping element
L	120 mm	Length braking and clamping element
	2.800 N	Clamping force
≈m	2,43 kg	Weight

Dimensions

J _B	58 mm	Hole pattern
J _C	48 mm	Hole pattern
A ₁	13,5 mm	Distance
J _L	100 mm	Hole pattern
H ₁	7,9 mm	Space (system)
H ₃	8,1 mm	Mounting dimension
A _{L2}	5 mm	Distance
d ₁	M8x1	Size thread
G ₂	M8	Size thread above for DIN ISO 4762-12.9
M _A	42,2 Nm	Tightening torque above