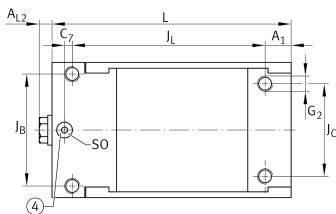
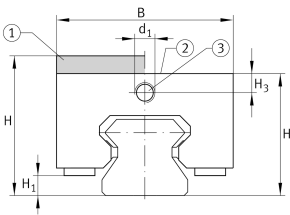


BKE.TSX25-D

Braking/clamping element

Braking and clamping element BKE.TSX..-D, hydraulic connector on end face, for linear recirculating roller bearing and guideway assembly

Technical information



Your current product variant

Size code	25
Version	D

Main Dimensions & Performance Data

H	36 mm	Height sytem
	without	Adapter plate
B	47 mm	Width of braking and clamping element
L	91 mm	Length braking and clamping element
	1.000 N	Clamping force
≈m	0,64 kg	Weight



Dimensions

J _B	38 mm	Hole pattern
J _C	34 mm	Hole pattern
A ₁	10 mm	Distance
J _L	75 mm	Hole pattern
H ₁	6,2 mm	Space (system)
H ₃	6 mm	Mounting dimension
A _{L2}	5 mm	Distance
d ₁	M6x1	Size thread
	6 mm	Max. diameter of the oil feed hole
G ₂	M6	Size thread above for DIN ISO 4762-12.9
M _A	17,4 Nm	Tightening torque above