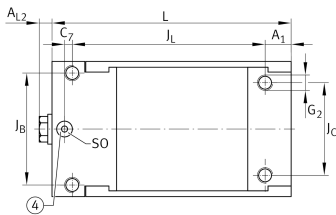
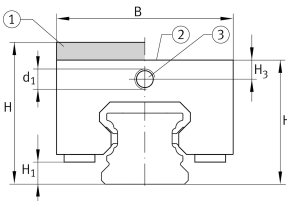
**BKE.TKSD35** [↗](#)

## Braking/clamping element

Braking and clamping element BKE.TKSD..., hydraulic connector on end face, for six-row linear recirculating ball bearing and guideway assembly

## Technical information



## Your current product variant

Size code	35
-----------	----

## Main Dimensions &amp; Performance Data

H	48 mm	Height system
	without	Adapter plate
B	69 mm	Width of braking and clamping element
L	120 mm	Length braking and clamping element
	2.800 N	Clamping force
≈m	2,45 kg	Weight

## Dimensions

J <sub>B</sub>	58 mm	Hole pattern
J <sub>C</sub>	48 mm	Hole pattern
A <sub>1</sub>	13,5 mm	Distance
J <sub>L</sub>	100 mm	Hole pattern
H <sub>1</sub>	6,6 mm	Space (system)
H <sub>3</sub>	8,1 mm	Mounting dimension
A <sub>L2</sub>	5 mm	Distance
d <sub>1</sub>	M8x1	Size thread
G <sub>2</sub>	M8	Size thread above for DIN ISO 4762-12.9
M <sub>A</sub>	42,2 Nm	Tightening torque above