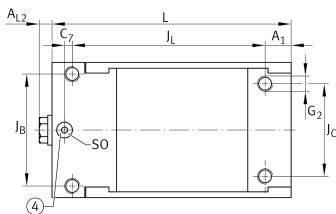
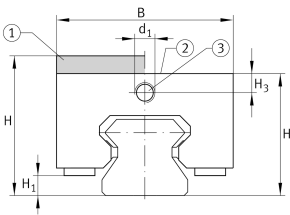


BKE.TSX45-D-H

Braking/clamping element

Braking and clamping element BKE.TSX...-D-H, high design, hydraulic connector on end face, for linear recirculating roller bearing and guideway assembly

Technical information



Your current product variant

Size Code	45
Version	D
Design	H

Main Dimensions & Performance Data

H	70 mm	Height system
	with	Adapter plate
B	85 mm	Width of braking and clamping element
L	141 mm	Length braking and clamping element
	4.300 N	Clamping force
≈m	5,12 kg	Weight



Dimensions

J _B	70 mm	Hole pattern
J _C	60 mm	Hole pattern
A ₁	15 mm	Distance
J _L	113 mm	Hole pattern
H ₁	11,8 mm	Space (system)
H ₃	10 mm	Mounting dimension
A _{L2}	5 mm	Distance
d ₁	M8x1	Size thread
G ₂	M10	Size thread above for DIN ISO 4762-12.9
M _A	83 Nm	Tightening torque above