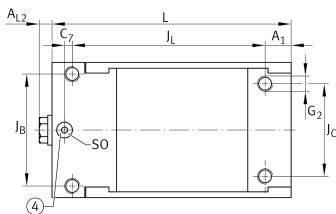
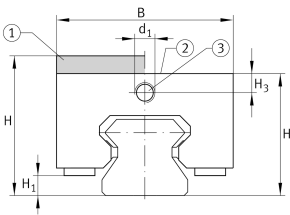


BKE.TSX45-D-SO [↗](#)

Braking/clamping element

Braking and clamping element BKE.TSX..-D, hydraulic connector on top face, for linear recirculating roller bearing and guideway assembly

Technical information



Your current product variant

Size code	45
Version	D
Oil feed	SO Oil feed from above

Main Dimensions & Performance Data

H	60 mm	Height system
	without	Adapter plate
B	85 mm	Width of braking and clamping element
L	141 mm	Length braking and clamping element
	4.300 N	Clamping force
≈m	4,24 kg	Weight



Dimensions

J _B	70 mm	Hole pattern
J _C	60 mm	Hole pattern
A ₁	15 mm	Distance
J _L	113 mm	Hole pattern
C ₇	5 mm	Distance
H ₁	11,8 mm	Space (system)
H ₃	10 mm	Mounting dimension
A _{L2}	5 mm	Distance
d ₁	M8x1	Size thread
SO	7x1,5	O-ring
	6 mm	Max. diameter of the oil feed hole
G ₂	M10	Size thread above for DIN ISO 4762-12.9
M _A	83 Nm	Tightening torque above