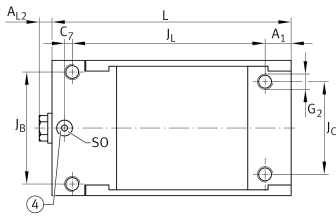
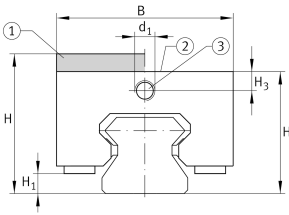
**BKE.TSX45-D-H-SO**

## Braking/clamping element

Braking and clamping element BKE.TSX..-D-H-SO, high design, hydraulic connector on top face, for linear recirculating roller bearing and guideway assembly

## Technical information

**Your current product variant**

Size Code	45
Version	D
Design	H
Oil feed	SO Oil feed from above

**Main Dimensions & Performance Data**

H	70 mm	Height system
	with	Adapter plate
B	85 mm	Width of braking and clamping element
L	141 mm	Length braking and clamping element
	4.300 N	Clamping force
≈m	5,13 kg	Weight



### Dimensions

J <sub>B</sub>	70 mm	Hole pattern
J <sub>C</sub>	60 mm	Hole pattern
A <sub>1</sub>	15 mm	Distance
J <sub>L</sub>	113 mm	Hole pattern
C <sub>7</sub>	5 mm	Distance
H <sub>1</sub>	11,8 mm	Space (system)
H <sub>3</sub>	10 mm	Mounting dimension
A <sub>L2</sub>	5 mm	Distance
d <sub>1</sub>	M8x1	Size thread
SO	7x1,5	O-ring
	6 mm	Max. diameter of the oil feed hole
G <sub>2</sub>	M10	Size thread above for DIN ISO 4762-12.9
M <sub>A</sub>	83 Nm	Tightening torque above