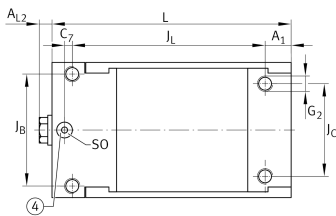
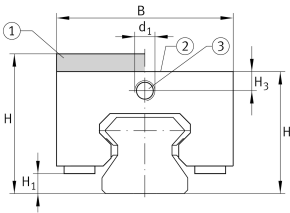
**BKE.TSX65-D-H**

Braking/clamping element

Braking and clamping element BKE.TSX...-D-H, high design, hydraulic connector on end face, for linear recirculating roller bearing and guideway assembly

Technical information



Your current product variant

Design	H
--------	---

Main Dimensions & Performance Data

H	100 mm	Height system
	with	Adapter plate
B	125 mm	Width of braking and clamping element
L	186 mm	Length braking and clamping element
	11.000 N	Clamping force
≈m	14,54 kg	Weight

Dimensions

J _B	96 mm	Hole pattern
J _C	96 mm	Hole pattern
A ₁	22 mm	Distance
J _L	150 mm	Hole pattern
H ₁	18,2 mm	Space (system)
H ₃	17,5 mm	Mounting dimension
A _{L2}	7,5 mm	Distance
d ₁	M16x1,5	Size thread
G ₂	M14	Size thread above for DIN ISO 4762-12.9
M _A	229 Nm	Tightening torque above