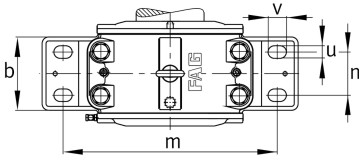
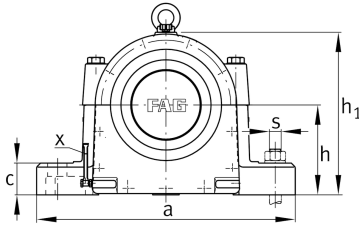


**FAG****LOE544-N-AL-L**

Plummer block housing

Plummer block housing, split, for spherical roller bearings, oil-lubrication

Technical information

**Main Dimensions & Performance Data**

d	200 mm	Shaft diameter
a	880 mm	Length base
h ₁	565 mm	Height
g ₁	380 mm	Total width
≈m	361 kg	Weight

Dimensions

b	240 mm	Width base
c	105 mm	Height base
D	400 mm	Outside diameter bearing
g	280 mm	Width housing body
g ₃	20 mm	Wall thickness
h	310 mm	Center height
m	720 mm	Distance fixing bore
n	130 mm	Bore distance width
s	M42	Size of fixing screws
u	48 mm	Width slot
v	70 mm	Length slot

Additional information

8,2 l	Oil quantity first filling
110 mm	Maximum height oil level
80 mm	Minimum height oil level



View product details on medias

23.04.2026, 06:19:31 UTC

SCHAEFFLER

Temperature range

T _{min}	-20 °C	Operating temperature min.
------------------	--------	----------------------------

T _{max}	100 °C	Operating temperature max.
------------------	--------	----------------------------