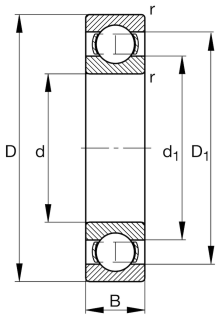


**FAG****6230-J20C-C4**

Deep groove ball bearing

Deep groove ball bearing 62...-J20C, single row, steel sheet metal cage, ceramic coated

Technical information



Your current product variant

Type of Seal	Without	Not sealed
Cage	JN	Steel sheet metal
Tolerance class	PN	Normal (ISO 492:2023)
Dimensional / heat stabilization	S1	Rings dimensional stabilized up to 200°
Lubricant	Without	Bearing not greased
Radial internal clearance	C4 (Group 4)	Internal clearance larger than C3
Bore type	Z	Cylindrical
Coating	J20C	Current insulation, inner ring ceramic coated

Main Dimensions & Performance Data

d	150 mm	Bore diameter
D	270 mm	Outside diameter
B	45 mm	Width
C _r	187.000 N	Basic dynamic load rating, radial
C _{0r}	168.000 N	Basic static load rating, radial
C _{ur}	8.100 N	Fatigue load limit, radial
n _G	3.350 1/min	Limiting speed
n _{gr}	3.350 1/min	Reference speed
≈m	10,2 kg	Weight



Mounting dimensions

$d_{a \min}$	164 mm	Minimum diameter shaft shoulder
$D_{a \max}$	256 mm	Maximum diameter of housing shoulder
$r_{a \max}$	2,5 mm	Maximum fillet radius

Dimensions

r_{\min}	3 mm	Minimum chamfer dimension
D_1	229,15 mm	Shoulder diameter outer ring
d_1	191,1 mm	Shoulder diameter inner ring

Temperature range

T_{\min}	-30 °C	Operating temperature min.
T_{\max}	200 °C	Operating temperature max.

Calculation factors

f_0	15,2	Calculation factor
-------	------	--------------------

Characteristics

	Radial load
	Axial load in one direction
	Axial load in two directions
	Grease Lubrication
	Oil Lubrication
	Not sealed
	Current insulated