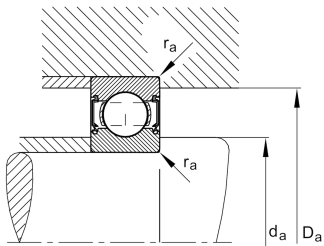
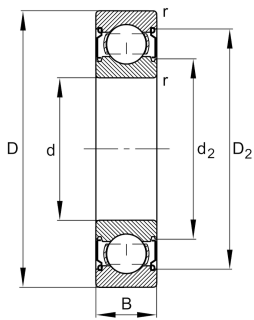


**FAG****6408-C-2Z-C3**

Deep groove ball bearing

Deep groove ball bearing 64...-C-2Z, single row, Generation C, shields, steel sheet metal cage

Technical information



Your current product variant

Changed internal design	C	GenerationC
Sealing	2Z	Non-contact shield on both sides
Cage	JN	Steel sheet metal
Tolerance class	P6	Class6 (P6), better than PN
Dimensional / heat stabilization	S0	Rings dimensional stabilized up to 150°
Lubricant	GA13	Ball bearing and insert bearing grease
Radial internal clearance	C3 (Group 3)	Internal clearance larger than CN
Bore type	Z	Cylindrical

Main Dimensions & Performance Data

d	40 mm	Bore diameter
D	110 mm	Outside diameter
B	27 mm	Width
C_r	68.000 N	Basic dynamic load rating, radial
C_{0r}	38.000 N	Basic static load rating, radial
C_{ur}	2.650 N	Fatigue load limit, radial
n_G	8.000 1/min	Limiting speed
n_{gr}	7.700 1/min	Reference speed
$\approx m$	1,25 kg	Weight



Mounting dimensions

$d_{a \min}$	53 mm	Minimum diameter shaft shoulder
$D_{a \max}$	97 mm	Maximum diameter of housing shoulder
$r_{a \max}$	2 mm	Maximum fillet radius

Dimensions

r_{\min}	2 mm	Minimum chamfer dimension
D_1	92,1 mm	Shoulder diameter outer ring
D_2	95,22 mm	Caliber diameter outer ring
d_1	68,64 mm	Shoulder diameter inner ring
d_2	66,74 mm	Caliber diameter inner ring

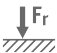
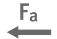




Temperature range

T_{\min}	-20 °C	Operating temperature min.
T_{\max}	120 °C	Operating temperature max.

Calculation factors

f_0	13,1	Calculation factor
-------	------	--------------------

Characteristics

	Radial load
	Axial load in one direction
	Axial load in two directions
	Lifetime lubrication, freedom from maintenance
	Grease Lubrication
	Sealed on both sides