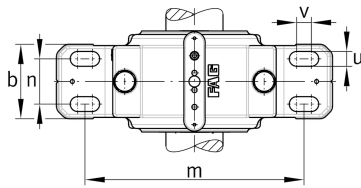
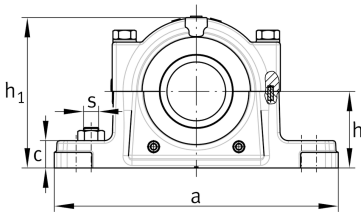


**FAG****SAF538X0615U** [↗](#)

Plummer block housing, 2 parts, SAF

split bearing housing, foot with 4 extended mounting slots

Technical information



Main Dimensions & Performance Data

d ₁	176,212 mm	Shaft diameter inch
d ₁	176,213 mm	Shaft diameter
a	711,2 mm	Length foot
h ₁	395,287 mm	Total height
g	266,7 mm	Width housing body
≈m	123,4 kg	Weight

Dimensions

b	190,5 mm	Width foot
c	79,375 mm	Height foot
D	340 mm	Outside diameter bearing
e	5,08 mm	Offset Bearing centre
h	200,025 mm	Distance shaft axis
k	101,8 mm	Width bearing seat
m	584,2 mm	Distance mounting holes
n	114,3 mm	Width bore spacing
s	31,75 mm	Screw size
v	34,925 mm	Width oblong hole
v	34,925 mm	Length oblong hole