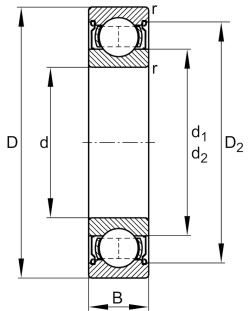


**FAG****HC6215-2Z-L038-C3**

Deep groove ball bearing

Deep groove ball bearing HC63...-2Z, Hybrid bearing, single row, shields, steel sheet metal cage

Technical information



Your current product variant

Material Bearing	HC	Hybrid bearing, rolling elements ceramic, bearing rings made of steel
Sealing	2Z	Non-contact shield on both sides
Cage	JN	Steel sheet metal
Tolerance class	PN	Normal (ISO 492:2023)
Dimensional / heat stabilization	S0	Rings dimensional stabilized up to 150°
Lubricant	L038	Grease (L038/customer specific)
Radial internal clearance	C3 (Group 3)	Internal clearance larger than CN
Bore type	Z	Cylindrical

Main Dimensions & Performance Data

d	75 mm	Bore diameter
D	130 mm	Outside diameter
B	25 mm	Width
C _r	70.000 N	Basic dynamic load rating, radial
C _{0r}	47.000 N	Basic static load rating, radial
C _{ur}	2.420 N	Fatigue load limit, radial
n _G	8.000 1/min	Limiting speed
n _{gr}	6.600 1/min	Reference speed
m	1,06 kg	Weight



Mounting dimensions

$d_{a \min}$	84 mm	Minimum diameter shaft shoulder
$D_{a \max}$	121 mm	Maximum diameter of housing shoulder
$r_{a \max}$	1,5 mm	Maximum fillet radius

Dimensions

r_{\min}	1,5 mm	Minimum chamfer dimension
D_1	113 mm	Shoulder diameter outer ring
D_2	115,5 mm	Caliber diameter outer ring
d_1	92,1 mm	Shoulder diameter inner ring

Temperature range

T_{\min}	-20 °C	Operating temperature min.
T_{\max}	150 °C	Operating temperature max.

Calculation factors

f_0	14	Calculation factor
-------	----	--------------------

Characteristics

	Radial load
	Axial load in one direction
	Axial load in two directions
	Lifetime lubrication, freedom from maintenance
	Grease Lubrication
	Sealed on both sides
	Current insulated