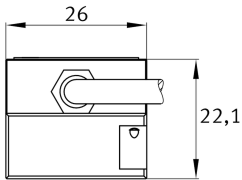
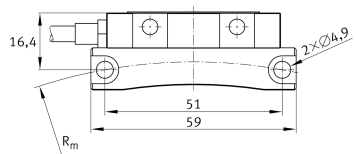
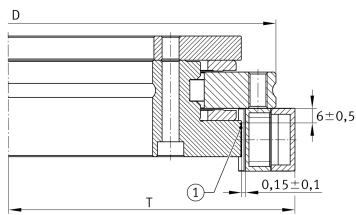


**MHA200-2-7-3-4-N-0860-01,0M-8-1-A** [↗](#)

sensing head

Measuring heads, for axial screw mounting

Technical information



Your current product variant

Cable length	1 m
--------------	-----

Digital Output

	Fanuc Serial #	Electronic interface
≈m	68,51 g	Weight

Main Dimensions & Performance Data

D	300 mm	Diameter bearing outer ring
H _M	26 mm	Height

Mounting dimensions

J _M	51 mm	Bore distance
R _m	143,9 mm	Pitch circle radius bores
T	158 mm	Distance bearing center measuring head

Additional information

2 Nm	Tightening torque
0,2 Nm	Tightening torque upper tolerance
-0,2 Nm	Tightening torque lower tolerance
2x ISO4762-M4x35-8.8	Cylinder head screws



View product details on medias

18.06.2026, 20:47:35 UTC

SCHAEFFLER

Cable

M12x1	Thread plug connector
8	Pins plug connector