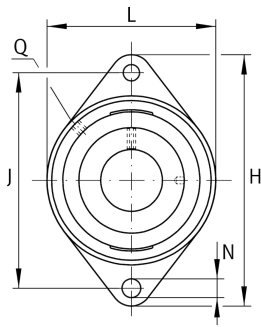


**RCJTZL30-XL**

Flanged housing unit

Flanged housing unit RCJTZL

Technical information

**Your current product variant**

Material	GG	Grey cast iron
----------	----	----------------

Main Dimensions & Performance Data

d	30 mm	Bore diameter
L	83 mm	Flange width
H	142 mm	Height flange
U	39 mm	Total height unit
C _r	20.700 N	Basic dynamic load rating, radial
C _{0r}	11.300 N	Basic static load rating, radial
C _{ur}	520 N	Fatigue load limit, radial
≈m	0,89 kg	Weight

Mounting dimensions

J	116,5 mm	Distance fixing bore
N	11,5 mm	Fixing bore
T ₁	3 mm	Height spigot
Z	80 mm	Diameter spigot
	h8	Diameter spigot clearance
n	2	Number of screwing holes



Dimensions

A	28 mm	Height housing
A ₁	12 mm	Thickness of flange
A ₂	17 mm	Distance raceway
B	36,5 mm	Width
V	83 mm	Shoulder diameter housing
Q	M6	Connection thread for lubrication

Additional information

1	Number of housings
GEHCJTZ06-GG	Housing
GLE30-XL-KRR-B	Bearing designation

Temperature range

T _{min}	-40 °C	Operating temperature min.
T _{max}	180 °C	Operating temperature max.