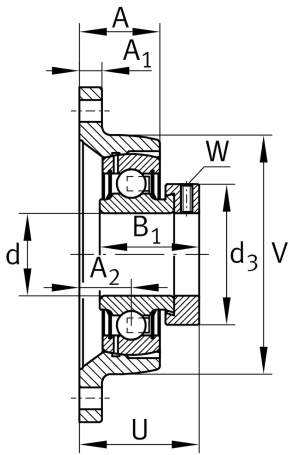
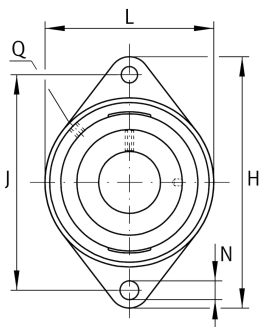


**PCJT30-N-FA125.8-OSE**

Flanged housing unit

Flanged housing unit PCJT..-N-FA125.8-OSE

Technical information

**Your current product variant**

Groove	N	Cast iron housing with undercut slot for end caps
Material	GG	Grey cast iron
Manufacturing instruction	FA125.8	Housing with Corroctect coating
Without locking device	OSE	Bearing without locking element

Main Dimensions & Performance Data

d	30 mm	Bore diameter
L	80 mm	Flange width
H	142 mm	Height flange
U	34,8 mm	Total height unit
C _r	20.700 N	Basic dynamic load rating, radial
C _{0r}	11.300 N	Basic static load rating, radial
≈m	0,74 kg	Weight

Mounting dimensions

J	116,5 mm	Distance fixing bore
N	11,5 mm	Fixing bore
n	2	Number of screwing holes



Dimensions

A	31 mm	Height housing
A ₁	12 mm	Thickness of flange
A ₂	20 mm	Distance raceway
V	80 mm	Shoulder diameter housing
Q	M6	Connection thread for lubrication

Additional information

1	Number of housings
GEHCJT06-GG-N-FA125.1	Housing
GRAE30-XL-NPP-B-OSE	Bearing designation

Temperature range

T _{min}	-20 °C	Operating temperature min.
T _{max}	100 °C	Operating temperature max.