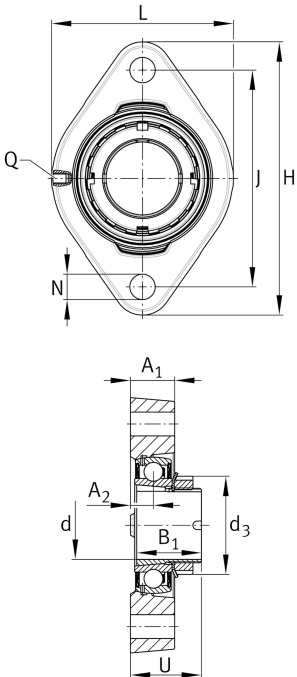
**RGLCTEA40-XL**

Flanged housing unit

Flanged housing unit RGLCTEA...-XL

X-life

Technical information

**Your current product variant**

Material	GG	Grey cast iron
----------	----	----------------

Main Dimensions & Performance Data

d	40 mm	Bore diameter
L	100 mm	Flange width
H	150 mm	Height flange
U	44,3 mm	Total height unit
C _r	31.000 N	Basic dynamic load rating, radial
C _{0r}	19.700 N	Basic static load rating, radial
≈m	1,32 kg	Weight

Mounting dimensions

J	119 mm	Distance fixing bore
N	14 mm	Fixing bore

Dimensions

A ₁	26 mm	Thickness of flange
A ₂	13,5 mm	Distance raceway
B ₁	38 mm	Locking collar total width
Q	M6	Connection thread for lubrication
d ₃	58 mm	Outside diameter eccentric locking collar



Additional information

GEHGLCTE08-GG	Housing
GSH40-XL-2RSR-B	Bearing designation

Temperature range

T _{min}	-20 °C	Operating temperature min.
T _{max}	100 °C	Operating temperature max.