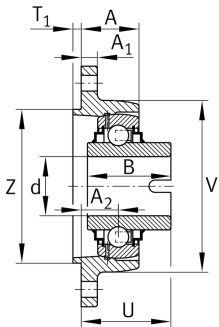
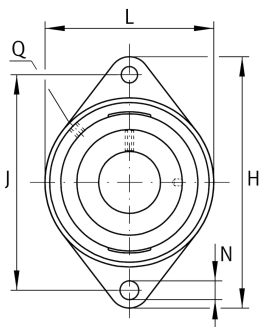


**RCJTZL40**

Flanged housing unit

Flanged housing unit RCJTZL

## Technical information

**Your current product variant**

Material	GG	Grey cast iron
----------	----	----------------

**Main Dimensions & Performance Data**

d	40 mm	Bore diameter
L	105 mm	Flange width
H	172 mm	Height flange
U	47 mm	Total height unit
C <sub>r</sub>	34.500 N	Basic dynamic load rating, radial
C <sub>0r</sub>	19.800 N	Basic static load rating, radial
m	1,56 kg	Weight

**Mounting dimensions**

J	143,5 mm	Distance fixing bore
N	14 mm	Fixing bore
T <sub>1</sub>	4 mm	Height spigot
Z	100 mm	Diameter spigot
	h8	Diameter spigot clearance



### Dimensions

A	32,5 mm	Height housing
A <sub>1</sub>	13 mm	Thickness of flange
A <sub>2</sub>	20 mm	Distance raceway
B	42,9 mm	Width
V	105 mm	Shoulder diameter housing
Q	M6	Connection thread for lubrication

### Additional information

GEHCJTZ08-GG	Housing
GLE40-XL-KRR-B	Bearing designation

### Temperature range

T <sub>min</sub>	-40 °C	Operating temperature min.
T <sub>max</sub>	180 °C	Operating temperature max.