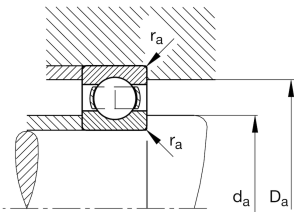
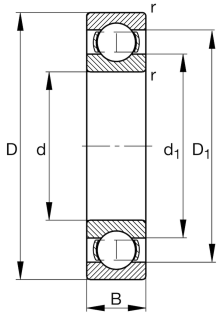


**FAG****6003-TVH**

Deep groove ball bearing

Deep groove ball bearing 60...TVH, single row, plastic cage

## Technical information



## Your current product variant

Type of Seal	Without	Not sealed
Cage	TVH	Solid cage made of glass-fiber reinforced polyamid PA66
Tolerance class	PN	Normal (PN)
Dimensional / heat stabilization	SN	Rings dimensional stabilized up to 120°
Lubricant	Without	Bearing not greased
Radial internal clearance	CN (Group N)	Normal internal clearance
Bore type	Z	Cylindrical

## Main Dimensions &amp; Performance Data

d	17 mm	Bore diameter
D	35 mm	Outside diameter
B	10 mm	Width
C <sub>r</sub>	6.400 N	Basic dynamic load rating, radial
C <sub>0r</sub>	3.250 N	Basic static load rating, radial
C <sub>ur</sub>	162 N	Fatigue load limit, radial
n <sub>G</sub>	31.000 1/min	Limiting speed
n <sub>gr</sub>	20.300 1/min	Reference speed
m	0,036 kg	Weight



### Mounting dimensions

$d_{a \min}$	19 mm	Minimum diameter shaft shoulder
$D_{a \max}$	33 mm	Maximum diameter of housing shoulder
$r_{a \max}$	0,3 mm	Maximum fillet radius

### Dimensions

$r_{\min}$	0,3 mm	Minimum chamfer dimension
$D_1$	29,51 mm	Shoulder diameter outer ring
$D_2$	30,81 mm	Caliber diameter outer ring
$d_1$	22,65 mm	Shoulder diameter inner ring

### Temperature range

$T_{\min}$	-30 °C	Operating temperature min.
$T_{\max}$	120 °C	Operating temperature max.

### Calculation factors

$f_0$	14,3	Calculation factor
-------	------	--------------------

### Characteristics

	Radial load
	Axial load in one direction
	Axial load in two directions
	Grease Lubrication
	Oil Lubrication
	Not sealed