



FAG

BND3056-H-W-Y-BL-D

Housing body

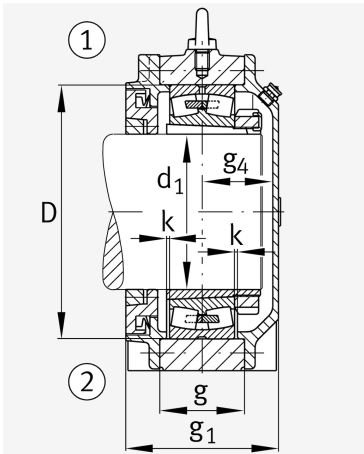
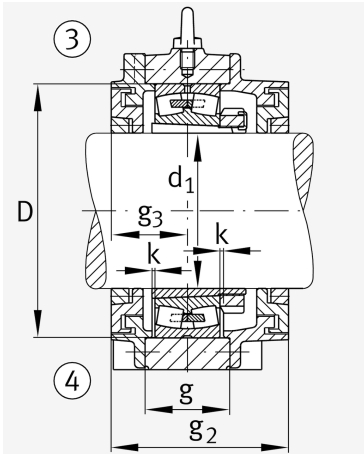
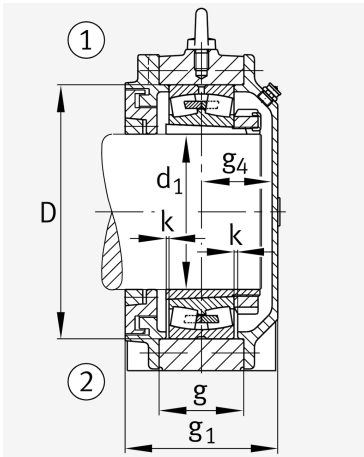
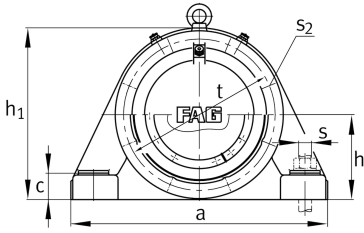
For bearings with a conical bore and clamping sleeve with constant diameter, BND

Technical information

Main Dimensions & Performance Data



d 1	260 mm	Shaft diameter
a	760 mm	Length base
h 1	520 mm	Total height
g 1	236 mm	Total width with lid g1
g 2	281 mm	Total width with lid g2
≈m	162,9 kg	Weight



Dimensions

b	240 mm	Width base
c	80 mm	Height base foot
D	420 mm	Outside Diameter
g	135 mm	Width housing body
g ₃	118 mm	Locking collar width g ₃
g ₄	108 mm	Locking collar width g ₄
h	260 mm	Distance shaft axis
k	4 mm	Axial displacement
m	630 mm	Distance fixing bore
n	140 mm	Bore distance width
s	M36	Size of fixing screws
s ₂	M16	Thread fixing bore
s ₂	8	Number of screwing holes
t	460 mm	Pitch circle dia fixing holes
u	42 mm	Width oblong holes
v	52 mm	Lenght oblong hole

Additional information

H3056(-HG)	Adaptive Sleeve
23056..-K	Bearing designation

Temperature range

T _{min}	-20 °C	Operating temperature min.
T _{max}	100 °C	Operating temperature max.



View product details on medias

29.06.2026, 15:32:06 UTC

SCHAEFFLER

