



**FAG**

## **BND3144-H-W-Y-AL-D**

Housing body

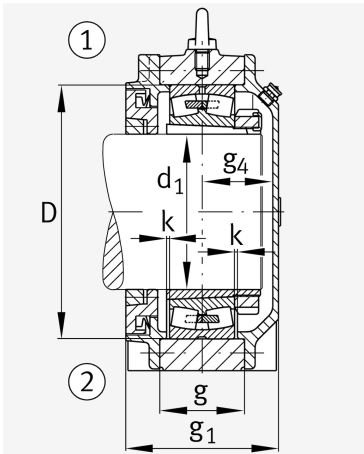
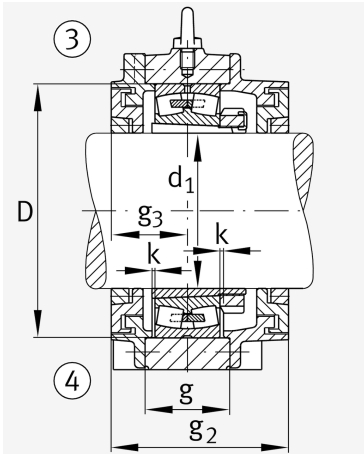
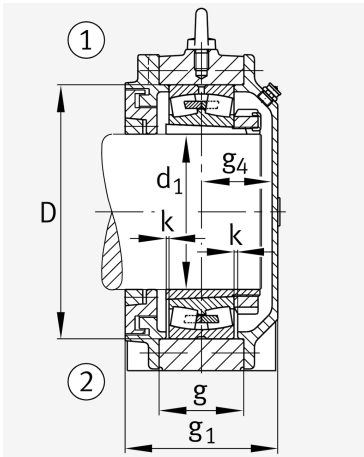
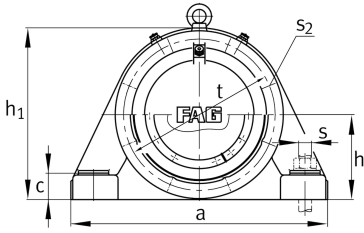
For bearings with a conical bore and clamping sleeve with constant diameter, BND

### Technical information

#### Main Dimensions & Performance Data



d 1	200 mm	Shaft diameter
a	780 mm	Length base
h 1	475 mm	Total height
g 1	252 mm	Total width with lid g1
g 2	291 mm	Total width with lid g2
≈m	165 kg	Weight



**Dimensions**

b	240 mm	Width base
c	75 mm	Height base foot
D	370 mm	Outside Diameter
g	150 mm	Width housing body
g <sub>3</sub>	134 mm	Locking collar width g <sub>3</sub>
g <sub>4</sub>	110 mm	Locking collar width g <sub>4</sub>
h	235 mm	Distance shaft axis
k	4 mm	Axial displacement
m	640 mm	Distance fixing bore
n	140 mm	Bore distance width
s	M36	Size of fixing screws
s <sub>2</sub>	M16	Thread fixing bore
s <sub>2</sub>	8	Number of screwing holes
t	420 mm	Pitch circle dia fixing holes
u	42 mm	Width oblong holes
v	52 mm	Lenght oblong hole

**Additional information**

H3144X(-HG)	Adaptive Sleeve
23144..-K	Bearing designation

**Temperature range**

T <sub>min</sub>	-20 °C	Operating temperature min.
T <sub>max</sub>	100 °C	Operating temperature max.



View product details on medias

29.06.2026, 14:36:31 UTC

SCHAEFFLER

