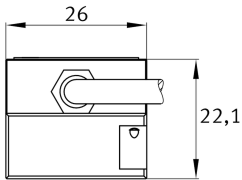
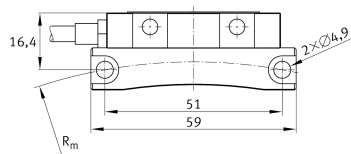
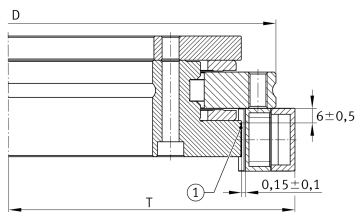


**MHA180-2-7-3-4-N-0768-01,0M-8-1-A** [↗](#)

sensing head

Measuring heads, for axial screw mounting

## Technical information

**Your current product variant**

Cable length 1 m

**Digital Output**

Fanuc Serial # Electronic interface

≈m 68,67 g Weight

**Main Dimensions & Performance Data**

D 280 mm Diameter bearing outer ring

H<sub>M</sub> 26 mm Height**Mounting dimensions**J<sub>M</sub> 51 mm Bore distanceR<sub>m</sub> 129,5 mm Pitch circle radius bores

T 143 mm Distance bearing center measuring head

**Additional information**

2 Nm Tightening torque

0,2 Nm Tightening torque upper tolerance

-0,2 Nm Tightening torque lower tolerance

2x ISO4762-M4x35-8.8 Cylinder head screws



View product details on medias

18.04.2026, 12:51:13 UTC

SCHAEFFLER

### Cable

---

M12x1	Thread plug connector
8	Pins plug connector