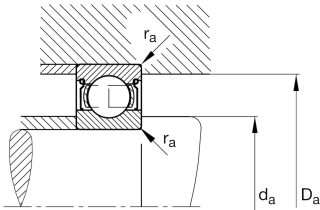
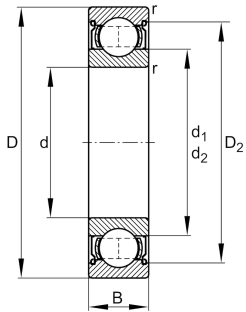


**FAG****6013-2Z-L069-C3**

Deep groove ball bearing

Deep groove ball bearing 60...2Z, single row, shields, steel sheet metal cage

## Technical information



## Your current product variant

Sealing	2Z	Non-contact shield on both sides
Cage	JN	Steel sheet metal
Tolerance class	PN	Normal (ISO 492:2023)
Dimensional / heat stabilization	S0	Rings dimensional stabilized up to 150°
Lubricant	L069	Low noise high-temperature grease, interchangeable with grease L207
Radial internal clearance	C3 (Group 3)	Internal clearance larger than CN
Bore type	Z	Cylindrical

## Main Dimensions &amp; Performance Data

d	65 mm	Bore diameter
D	100 mm	Outside diameter
B	18 mm	Width
C <sub>r</sub>	32.500 N	Basic dynamic load rating, radial
C <sub>0r</sub>	25.000 N	Basic static load rating, radial
C <sub>ur</sub>	1.300 N	Fatigue load limit, radial
n <sub>G</sub>	8.100 1/min	Limiting speed
n <sub>gr</sub>	7.100 1/min	Reference speed
m	0,47 kg	Weight



### Mounting dimensions

$d_{a \min}$	71 mm	Minimum diameter shaft shoulder
$D_{a \max}$	94 mm	Maximum diameter of housing shoulder
$r_{a \max}$	1 mm	Maximum fillet radius

### Dimensions

$r_{\min}$	1,1 mm	Minimum chamfer dimension
$D_1$	88,8 mm	Shoulder diameter outer ring
$D_2$	91,52 mm	Caliber diameter outer ring
$d_1$	76,225 mm	Shoulder diameter inner ring


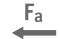




### Temperature range

$T_{\min}$	-30 °C	Operating temperature min.
$T_{\max}$	150 °C	Operating temperature max.

### Calculation factors

$f_0$	15,7	Calculation factor
-------	------	--------------------

### Characteristics

-   $F_r$  Radial load
-   $F_a$  Axial load in one direction
-   $F_a$  Axial load in two directions
-   $L_h$  Lifetime lubrication, freedom from maintenance
-  Grease Lubrication
-  Sealed on both sides