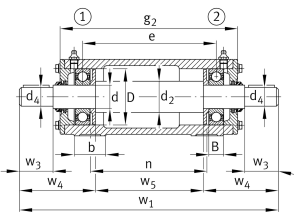
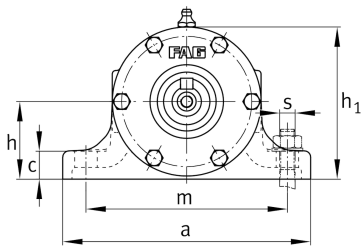


**FAG****VRE310-A**

## Plummer block housing unit

Plummer block housing, consisting of housing body VR, shaft VRW and two bearings

## Technical information

**Main Dimensions & Performance Data**

d	50 mm	Shaft diameter
a	210 mm	Length base
h <sub>1</sub>	138 mm	Height
g <sub>2</sub>	381 mm	Total width with cover
≈m	28,1 kg	Weight

**Dimensions**

B	27 mm	Width
b	60 mm	Width base
c	25 mm	Height base
D	110 mm	Outside diameter bearing
d <sub>2</sub>	60 mm	Shaft diameter shoulder
d <sub>4</sub>	42 mm	Shaft diameter outside
e	313 mm	Locking collar width
h	70 mm	Center height
m	170 mm	Distance fixing bore
n	275 mm	Bore distance width
s	M12	Size of fixing screws
w <sub>1</sub>	625 mm	Length shaft total
w <sub>3</sub>	110 mm	Length shaft tap
w <sub>4</sub>	179,5 mm	Length shaft end
w <sub>5</sub>	266 mm	Length shaft shoulder



View product details on medias

12.06.2026, 06:09:30 UTC

SCHAEFFLER

### Additional information

---

VRW310-A	Suitable shaft
6310-C3	Bearing designation
6310-C3	Reference bearing designation
VR310-A	Housing