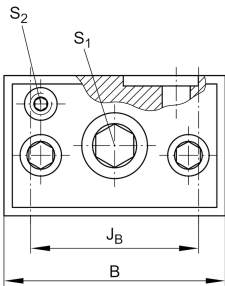


VUS85280 [↗](#)

Adjusting gib

Technical information

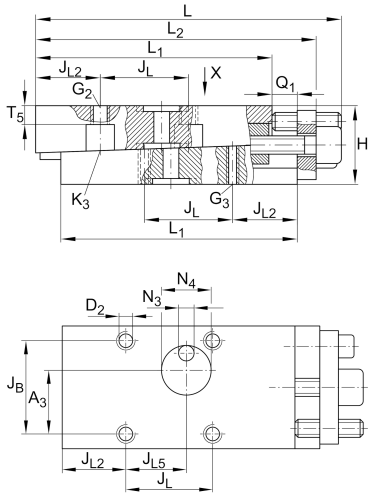


Your current product variant

Size code 85280

Main Dimensions & Performance Data

L	314 mm	Length max
H	38 mm	Height min
B	100 mm	Width
≈m	8,37 kg	Weight



Mounting dimensions

L ₁	280 mm	
L ₂	300 mm	Max
J _B	82,5 mm	
Tol J _B	+ 0,1 mm	Upper tolerance
Tol J _B	- 0,1 mm	Lower tolerance
J _L	101,5 mm	
Tol J _L	+ 0,1 mm	Upper tolerance
Tol J _L	- 0,1 mm	Lower tolerance
J _{L2}	89 mm	
J _{L5}	53,5 mm	
Q ₁	10 mm	Max
A ₃	41,25 mm	
A ₄	25 mm	
N ₃	8 mm	
N ₄	10 mm	
T ₅	6 mm	



Additional information

S ₁	12 mm	Adjustment screw hexagon socket
S ₂	4 mm	Locking/extraction screw hexagon socket
G ₂	M14	Fixing screws DIN ISO4762-12.9
M _{A G2}	220 Nm	Tightening torque
G ₃	M10	Fixing screws DIN ISO4762-12.9
M _{A G3}	83 Nm	Tightening torque
K ₃	M10	Fixing screws DIN ISO4762-12.9
M _{A K3}	83 Nm	Tightening torque
D ₂	12,5 mm	Core hole
Δh	0,5 mm	Adjustment max
	0,075 mm	Adjustment per screw revolution

Related products

RUS85280	For linear roller bearing
----------	---------------------------