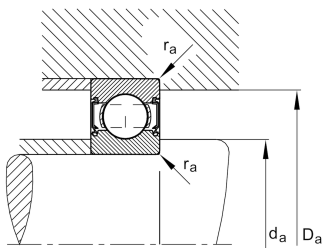
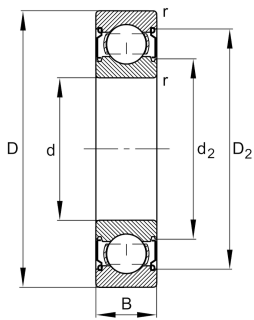


**FAG****6004-C-2Z-L038-C3>V**

Deep groove ball bearing

Deep groove ball bearing 60...-C-2Z, single row, Generation C, shields, steel sheet metal cage

Technical information

**Your current product variant**

Version code	>V	Not marked on bearing
Changed internal design	C	GenerationC
Sealing	2Z	Non-contact shield on both sides
Cage	JN	Steel sheet metal
Tolerance class	P6	Class 6 (ISO 492:2023)
Dimensional / heat stabilization	SN	Rings dimensional stabilized up to 120°
Lubricant	L038	Grease (L038/customer specific)
Radial internal clearance	C3 (Group 3)	Internal clearance larger than CN
Bore type	Z	Cylindrical

Main Dimensions & Performance Data

d	20 mm	Bore diameter
D	42 mm	Outside diameter
B	12 mm	Width
C _r	10.600 N	Basic dynamic load rating, radial
C _{0r}	5.000 N	Basic static load rating, radial
C _{ur}	340 N	Fatigue load limit, radial
n _G	23.200 1/min	Limiting speed
n _{gr}	19.700 1/min	Reference speed
≈m	0,065 kg	Weight



Mounting dimensions

$d_{a \min}$	23,2 mm	Minimum diameter shaft shoulder
$D_{a \max}$	38,8 mm	Maximum diameter of housing shoulder
$r_{a \max}$	0,6 mm	Maximum fillet radius

Dimensions

r_{\min}	0,6 mm	Minimum chamfer dimension
D_1	35,45 mm	Shoulder diameter outer ring
D_2	37,38 mm	Caliber diameter outer ring
d_1	26,55 mm	Shoulder diameter inner ring
d_2	25,38 mm	Caliber diameter inner ring

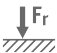
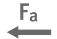




Temperature range

T_{\min}	-20 °C	Operating temperature min.
T_{\max}	120 °C	Operating temperature max.

Calculation factors

f_0	13,8	Calculation factor
-------	------	--------------------

Characteristics

	Radial load
	Axial load in one direction
	Axial load in two directions
	Lifetime lubrication, freedom from maintenance
	Grease Lubrication
	Sealed on both sides