



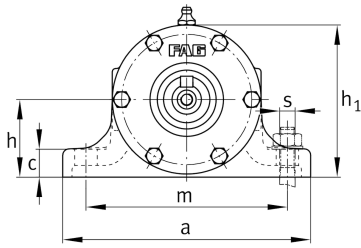
**FAG**

### VRE316-C [↗](#)

Plummer block housing unit

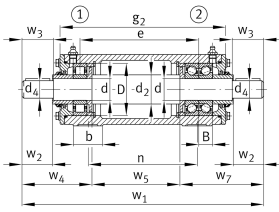
Plummer block housing, consisting of housing body VR, shaft VRW and two bearings

## Technical information



### Main Dimensions & Performance Data

d	80 mm	Shaft diameter
a	320 mm	Length base
h <sub>1</sub>	217 mm	Height
g <sub>2</sub>	550 mm	Total width with cover
≈m	105,7 kg	Weight



## Dimensions

B	39 mm	Width
b	80 mm	Width base
c	30 mm	Height base
D	170 mm	Outside diameter bearing
d <sub>2</sub>	95 mm	Shaft diameter shoulder
d <sub>4</sub>	70 mm	Shaft diameter outside
e	449,5 mm	Locking collar width
h	112 mm	Center height
m	260 mm	Distance fixing bore
n	420 mm	Bore distance width
s	M16	Size of fixing screws
w <sub>1</sub>	861 mm	Length shaft total
w <sub>2</sub>	140 mm	Distance shaft end
w <sub>3</sub>	143 mm	Length shaft tap
w <sub>4</sub>	227,5 mm	Length shaft end
w <sub>5</sub>	367 mm	Length shaft shoulder
w <sub>7</sub>	266,5 mm	Length shaft end

## Additional information

VRW316-C	Suitable shaft
NU316-E-TVP2-C3	Bearing designation
2X7316-B-TVP-UA	Reference bearing designation
VR316-C	Housing