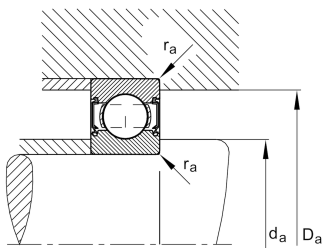
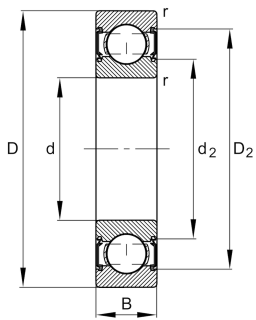


**FAG****6202-C-2HRS-L100-C3>V**

Deep groove ball bearing

Deep groove ball bearing 62...-C-2HRS, single row, Generation C, seals, steel sheet metal cage

## Technical information

**Your current product variant**

Version code	>V	Not marked on bearing
Changed internal design	C	GenerationC
Sealing	2HRS	Contact seal on both sides
Cage	JN	Steel sheet metal
Tolerance class	P6	Class 6 (ISO 492:2023)
Dimensional / heat stabilization	SN	Rings dimensional stabilized up to 120°
Lubricant	L100	Grease (L100/customer specific)
Radial internal clearance	C3 (Group 3)	Internal clearance larger than CN
Bore type	Z	Cylindrical

**Main Dimensions & Performance Data**

d	15 mm	Bore diameter
D	35 mm	Outside diameter
B	11 mm	Width
C <sub>r</sub>	8.900 N	Basic dynamic load rating, radial
C <sub>0r</sub>	3.750 N	Basic static load rating, radial
C <sub>ur</sub>	260 N	Fatigue load limit, radial
n <sub>G</sub>	19.400 1/min	Limiting speed
≈m	0,044 kg	Weight



### Mounting dimensions

$d_{a \min}$	19,2 mm	Minimum diameter shaft shoulder
$D_{a \max}$	30,8 mm	Maximum diameter of housing shoulder
$r_{a \max}$	0,6 mm	Maximum fillet radius

### Dimensions

$r_{\min}$	0,6 mm	Minimum chamfer dimension
$D_1$	29 mm	Shoulder diameter outer ring
$D_2$	30,92 mm	Caliber diameter outer ring
$d_1$	21,06 mm	Shoulder diameter inner ring
$d_2$	20,08 mm	Caliber diameter inner ring

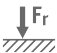
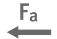




### Temperature range

$T_{\min}$	-30 °C	Operating temperature min.
$T_{\max}$	100 °C	Operating temperature max.

### Calculation factors

$f_0$	13	Calculation factor
-------	----	--------------------

### Characteristics

	Radial load
	Axial load in one direction
	Axial load in two directions
	Lifetime lubrication, freedom from maintenance
	Grease Lubrication
	Sealed on both sides