



FAG

BND3156-H-W-Y-BL-D

Housing body

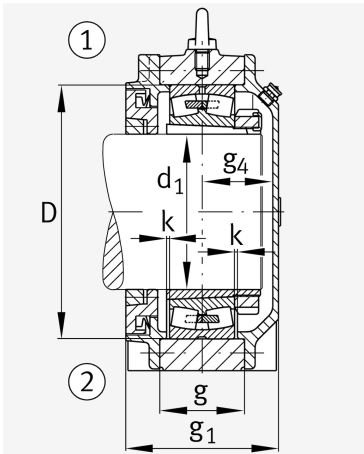
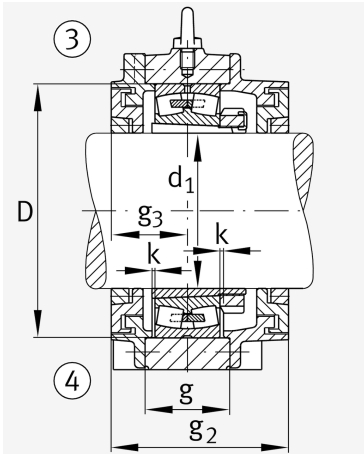
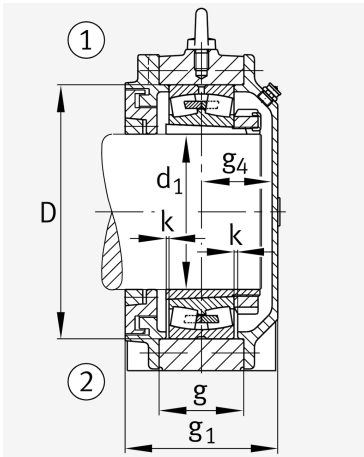
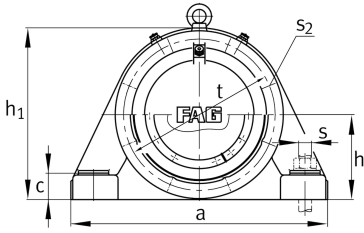
For bearings with a conical bore and clamping sleeve with constant diameter, BND

Technical information

Main Dimensions & Performance Data



d 1	260 mm	Shaft diameter
a	900 mm	Length base
h 1	585 mm	Total height
g 1	294 mm	Total width with lid g1
g 2	337 mm	Total width with lid g2
≈m	317 kg	Weight



Dimensions

b	250 mm	Width base
c	90 mm	Height base foot
D	460 mm	Outside Diameter
g	176 mm	Width housing body
g ₃	151 mm	Locking collar width g ₃
g ₄	133 mm	Locking collar width g ₄
h	290 mm	Distance shaft axis
k	4 mm	Axial displacement
m	750 mm	Distance fixing bore
n	140 mm	Bore distance width
s	M36	Size of fixing screws
s ₂	M20	Thread fixing bore
s ₂	8	Number of screwing holes
t	510 mm	Pitch circle dia fixing holes
u	42 mm	Width oblong holes
v	52 mm	Lenght oblong hole

Additional information

H3156X(-HG)	Adaptive Sleeve
23156..-K	Bearing designation

Temperature range

T _{min}	-20 °C	Operating temperature min.
T _{max}	100 °C	Operating temperature max.



View product details on medias

30.06.2026, 22:33:56 UTC

SCHAEFFLER

