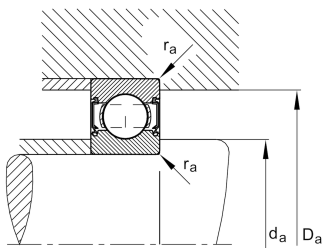
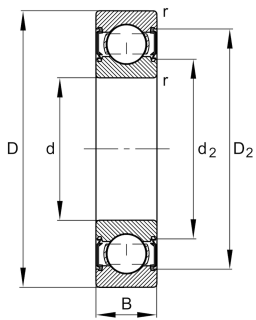


**FAG****6305-C-HRS-C3>V**

Deep groove ball bearing

Deep groove ball bearing 63...-C-HRS, single row, Generation C, seal, steel sheet metal cage

Technical information

**Your current product variant**

Version code	>V	Not marked on bearing
Changed internal design	C	GenerationC
Sealing	HRS	Contact seal on one side
Cage	JN	Steel sheet metal
Tolerance class	P6	Class6 (P6), better then PN
Dimensional / heat stabilization	SN	Rings dimensional stabilized up to 120°
Lubricant	Without	Bearing not greased
Radial internal clearance	C3 (Group 3)	Internal clearance larger than CN
Bore type	Z	Cylindrical

Main Dimensions & Performance Data

d	25 mm	Bore diameter
D	62 mm	Outside diameter
B	17 mm	Width
C _r	26.500 N	Basic dynamic load rating, radial
C _{0r}	11.500 N	Basic static load rating, radial
C _{ur}	790 N	Fatigue load limit, radial
n _G	11.300 1/min	Limiting speed
≈m	0,2 kg	Weight



Mounting dimensions

$d_{a \min}$	32 mm	Minimum diameter shaft shoulder
$D_{a \max}$	55 mm	Maximum diameter of housing shoulder
$r_{a \max}$	1 mm	Maximum fillet radius

Dimensions

r_{\min}	1,1 mm	Minimum chamfer dimension
D_1	51,55 mm	Shoulder diameter outer ring
D_2	53,8 mm	Caliber diameter outer ring
d_1	35,45 mm	Shoulder diameter inner ring
d_2	34,12 mm	Caliber diameter inner ring

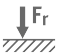
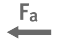




Temperature range

T_{\min}	-30 °C	Operating temperature min.
T_{\max}	100 °C	Operating temperature max.

Calculation factors

f_0	12,4	Calculation factor
-------	------	--------------------

Characteristics

	Radial load
	Axial load in one direction
	Axial load in two directions
	Grease Lubrication
	Oil Lubrication
	Sealed on one side