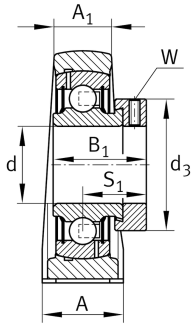
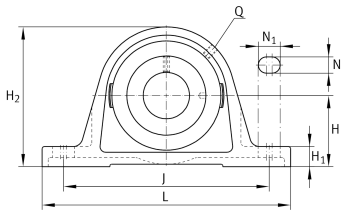


**PASE50-N-FA106** [↗](#)

Plummer block housing unit

Plummer block housing unit PASE...-N-FA106,
RIBB cast iron ASE SAO AK

Technical information

**Your current product variant**

Material	GG	Grey cast iron
Groove	N	Cast iron housing with undercut slot for end caps
Manufacturing instruction	FA106	Bearing subjected to special noise testing

Main Dimensions & Performance Data

d	50 mm	Bore diameter
L	200 mm	Length total
H ₂	115 mm	Height
C _r	35.000 N	Basic dynamic load rating, radial
C _{0r}	23.200 N	Basic static load rating, radial
≈m	2,62 kg	Weight

Mounting dimensions

J	158 mm	Distance fixing bore
N	18 mm	Width (slot)
N ₁	23 mm	Length (slot)



Dimensions

H	57,2 mm	Distance shaft axis
A	54 mm	Width (base)
A ₁	34 mm	Width (head)
H ₁	21,5 mm	Height (base)
Q	M6	Connection thread for lubrication

Additional information

GEHASE10-GG-N	Housing
GRAE50-NPP-B-FA106	Bearing designation
KASK10	Protecting cap

Temperature range

T _{min}	-20 °C	Operating temperature min.
T _{max}	120 °C	Operating temperature max.