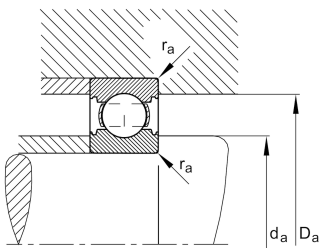
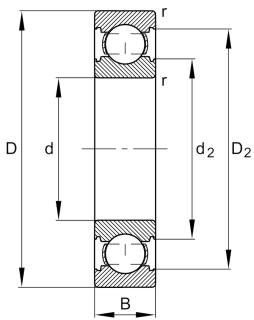


**FAG****6201-C-C3>V**

Deep groove ball bearing

Deep groove ball bearing 62...-C, single row,  
Generation C, steel sheet metal cage

## Technical information



## Your current product variant

Version code	>V	Not marked on bearing
Changed internal design	C	GenerationC
Sealing	Without	Not sealed
Cage	JN	Steel sheet metal
Tolerance class	P6	Class 6 (ISO 492:2023)
Dimensional / heat stabilization	SN	Rings dimensional stabilized up to 120°
Lubricant	Without	Bearing not greased
Radial internal clearance	C3 (Group 3)	Internal clearance larger than CN
Bore type	Z	Cylindrical

## Main Dimensions &amp; Performance Data

d	12 mm	Bore diameter
D	32 mm	Outside diameter
B	10 mm	Width
C <sub>r</sub>	8.000 N	Basic dynamic load rating, radial
C <sub>0r</sub>	3.100 N	Basic static load rating, radial
C <sub>ur</sub>	213 N	Fatigue load limit, radial
n <sub>G</sub>	37.000 1/min	Limiting speed
n <sub>gr</sub>	24.600 1/min	Reference speed
≈m	0,033 kg	Weight



### Mounting dimensions

$d_{a \min}$	16,2 mm	Minimum diameter shaft shoulder
$D_{a \max}$	27,8 mm	Maximum diameter of housing shoulder
$r_{a \max}$	0,6 mm	Maximum fillet radius

### Dimensions

$r_{\min}$	0,6 mm	Minimum chamfer dimension
$D_1$	26 mm	Shoulder diameter outer ring
$D_2$	27,92 mm	Caliber diameter outer ring
$d_1$	18,31 mm	Shoulder diameter inner ring
$d_2$	17,34 mm	Caliber diameter inner ring

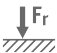
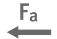
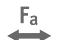



### Temperature range

$T_{\min}$	-30 °C	Operating temperature min.
$T_{\max}$	120 °C	Operating temperature max.

### Calculation factors

$f_0$	12,3	Calculation factor
-------	------	--------------------

### Characteristics

	Radial load
	Axial load in one direction
	Axial load in two directions
	Grease Lubrication
	Oil Lubrication
	Not sealed