

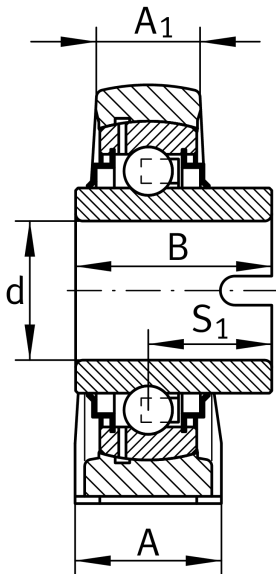
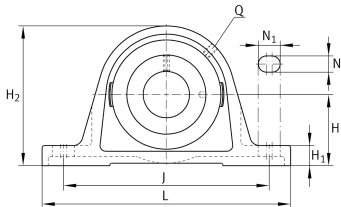
IMAGE  
COMING SOON**RASEL70-XL**

## Plummer block housing unit

Plummer block housing units RASEL, cast iron housing, non-locating bearing, drive slot on inner ring, R seals

X-life

## Technical information



## Your current product variant

Material	GG	Grey cast iron
----------	----	----------------

## Main Dimensions &amp; Performance Data

d	70 mm	Bore diameter
L	260 mm	Length total
H <sub>2</sub>	156 mm	Height
≈m	5,974 kg	Weight

## Mounting dimensions

J	202,5 mm	Distance fixing bore
N	22 mm	Width (slot)
N <sub>1</sub>	28 mm	Length (slot)

## Dimensions

H	79,4 mm	Distance shaft axis
A	65 mm	Width (base)
A <sub>1</sub>	44 mm	Width (head)
H <sub>1</sub>	27,5 mm	Height (base)
B	68,2 mm	Width
S <sub>1</sub>	41,2 mm	Distance of raceway to locking collar
Q	M6	Connection thread for lubrication



### Additional information

ASE14	Housing
GLE70-XL-KRR-B	Bearing designation

### Temperature range

T <sub>min</sub>	-40 °C	Operating temperature min.
T <sub>max</sub>	180 °C	Operating temperature max.