

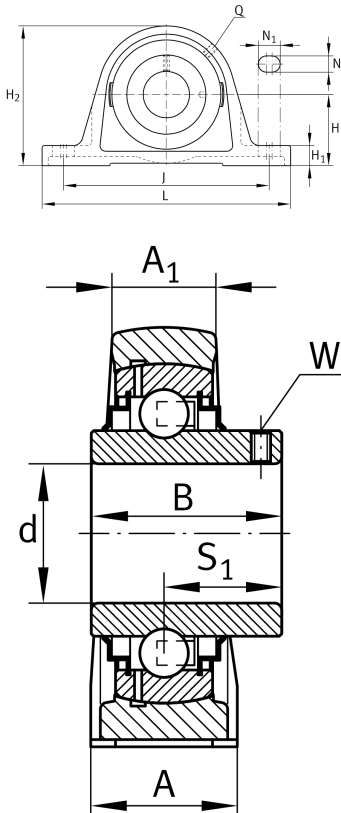
**RASEY80-XL** [↗](#)

Plummer block housing unit

Plummer block housing units RASEY, cast iron housing, radial insert ball bearing with grub screws in inner ring, R seals

X-life

Technical information



Your current product variant

Material	GG	Grey cast iron
----------	----	----------------

Main Dimensions & Performance Data

d	80 mm	Bore diameter
L	290 mm	Length total
H ₂	175 mm	Height
≈m	8,359 kg	Weight

Mounting dimensions

J	232 mm	Distance fixing bore
N	26 mm	Width (slot)
N ₁	35 mm	Length (slot)

Dimensions

H	89 mm	Distance shaft axis
A	78 mm	Width (base)
A ₁	55 mm	Width (head)
H ₁	30 mm	Height (base)
B	82,6 mm	Width
S ₁	49,3 mm	Distance of raceway to locking collar
Q	M6	Connection thread for lubrication



View product details on medias

25.05.2026, 19:26:18 UTC

SCHAEFFLER

Additional information

ASE16	Housing
GYE80-XL-KRR-B	Bearing designation

Temperature range

T _{min}	-20 °C	Operating temperature min.
T _{max}	100 °C	Operating temperature max.