

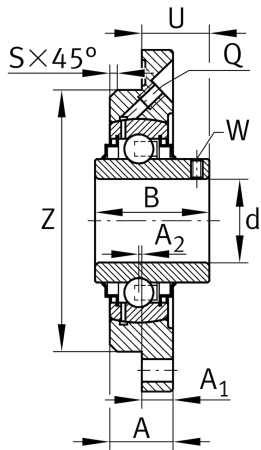
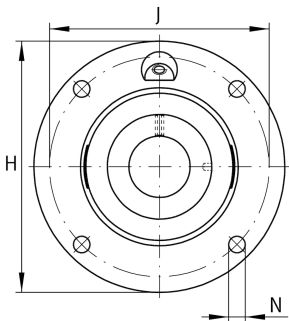
**RMEY90-XL**

Flanged housing unit

Housing units RMEY, four-bolt flanged housing units, cast iron, centring spigot, grub screws in inner ring, R seals

X-life

Technical information



Your current product variant

Material	GG	Grey cast iron
----------	----	----------------

Main Dimensions & Performance Data

d	90 mm	Bore diameter
H	265 mm	Height flange
U	60,3 mm	Total height unit
C _r	109.000 N	Basic dynamic load rating, radial
C _{0r}	79.000 N	Basic static load rating, radial
C _{ur}	2.700 N	Fatigue load limit, radial
≈m	8,86 kg	Weight

Mounting dimensions

J	220 mm	Pitch circle diameter (holes)
N	23 mm	Fixing bore
Z	190 mm	Diameter spigot
	h8	Diameter spigot clearance
n	4	Number of screwing holes



Dimensions

A	32 mm	Height housing
A ₁	20 mm	Thickness of flange
A ₂	-4 mm	Distance raceway
B	96 mm	Width
S	3 mm	Chamfer width
Q	M6	Connection thread for lubrication

Additional information

1	Number of housings
ME18	Housing
GYE90-XL-KRR-B	Bearing designation

Temperature range

T _{min}	-20 °C	Operating temperature min.
T _{max}	120 °C	Operating temperature max.