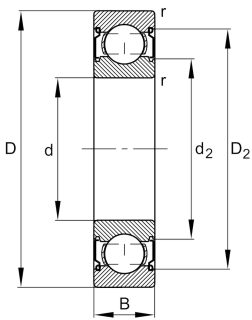


**FAG****6002-C-2Z-L237-C3>V**

Deep groove ball bearing

Deep groove ball bearing 60...-C-2Z, single row, Generation C, shields, steel sheet metal cage

Technical information



Your current product variant

| | | |
|----------------------------------|--------------|---|
| Version code | >V | Not marked on bearing |
| Changed internal design | C | GenerationC |
| Sealing | 2Z | Non-contact shield on both sides |
| Cage | JN | Steel sheet metal |
| Tolerance class | P6 | Class6 (P6), better then PN |
| Dimensional / heat stabilization | SN | Rings dimensional stabilized up to 120° |
| Lubricant | L237 | Grease (L237/customer specific) |
| Radial internal clearance | C3 (Group 3) | Internal clearance larger than CN |
| Bore type | Z | Cylindrical |

Main Dimensions & Performance Data

| | | |
|----------|--------------|-----------------------------------|
| d | 15 mm | Bore diameter |
| D | 32 mm | Outside diameter |
| B | 9 mm | Width |
| C_r | 6.300 N | Basic dynamic load rating, radial |
| C_{0r} | 2.850 N | Basic static load rating, radial |
| C_{ur} | 191 N | Fatigue load limit, radial |
| n_G | 31.500 1/min | Limiting speed |
| n_{gr} | 23.200 1/min | Reference speed |
| m | 0,029 kg | Weight |



Mounting dimensions

| | | |
|--------------|--------|--------------------------------------|
| $d_{a \min}$ | 17 mm | Minimum diameter shaft shoulder |
| $D_{a \max}$ | 30 mm | Maximum diameter of housing shoulder |
| $r_{a \max}$ | 0,3 mm | Maximum fillet radius |

Dimensions

| | | |
|------------|----------|------------------------------|
| r_{\min} | 0,3 mm | Minimum chamfer dimension |
| D_1 | 26,84 mm | Shoulder diameter outer ring |
| D_2 | 28,75 mm | Caliber diameter outer ring |
| d_1 | 20,16 mm | Shoulder diameter inner ring |
| d_2 | 19,18 mm | Caliber diameter inner ring |

Temperature range

| | | |
|------------|--------|----------------------------|
| T_{\min} | -30 °C | Operating temperature min. |
| T_{\max} | 120 °C | Operating temperature max. |

Calculation factors

| | | |
|-------|----|--------------------|
| f_0 | 14 | Calculation factor |
|-------|----|--------------------|

Characteristics

| | |
|---|--|
|  | Radial load |
|  | Axial load in one direction |
|  | Axial load in two directions |
|  | Lifetime lubrication, freedom from maintenance |
|  | Grease Lubrication |
|  | Sealed on both sides |