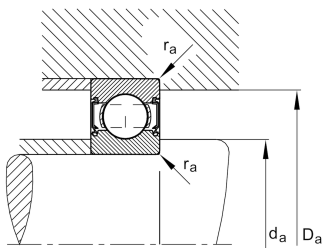
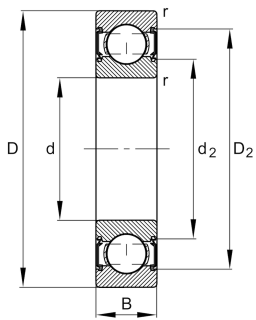


**FAG****6203-C-2HRS-L207-C3>V**

Deep groove ball bearing

Deep groove ball bearing 62...-C-2HRS, single row, Generation C, seals, steel sheet metal cage

## Technical information



## Your current product variant

Version code	>V	Not marked on bearing
Changed internal design	C	GenerationC
Sealing	2HRS	Contact seal on both sides
Cage	JN	Steel sheet metal
Tolerance class	P6	Class6 (P6), better then PN
Dimensional / heat stabilization	SN	Rings dimensional stabilized up to 120°
Lubricant	L207	Low noise high-temperature grease, interchangeable with grease L069
Radial internal clearance	C3 (Group 3)	Internal clearance larger than CN
Bore type	Z	Cylindrical

## Main Dimensions &amp; Performance Data

d	17 mm	Bore diameter
D	40 mm	Outside diameter
B	12 mm	Width
C <sub>r</sub>	11.000 N	Basic dynamic load rating, radial
C <sub>0r</sub>	4.750 N	Basic static load rating, radial
C <sub>ur</sub>	330 N	Fatigue load limit, radial
n <sub>G</sub>	16.900 1/min	Limiting speed
≈m	0,064 kg	Weight



### Mounting dimensions

$d_{a \min}$	21,2 mm	Minimum diameter shaft shoulder
$D_{a \max}$	35,8 mm	Maximum diameter of housing shoulder
$r_{a \max}$	0,6 mm	Maximum fillet radius

### Dimensions

$r_{\min}$	0,6 mm	Minimum chamfer dimension
$D_1$	32,9 mm	Shoulder diameter outer ring
$D_2$	34,84 mm	Caliber diameter outer ring
$d_1$	24,13 mm	Shoulder diameter inner ring
$d_2$	22,97 mm	Caliber diameter inner ring

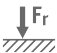
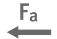
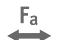



### Temperature range

$T_{\min}$	-30 °C	Operating temperature min.
$T_{\max}$	100 °C	Operating temperature max.

### Calculation factors

$f_0$	13	Calculation factor
-------	----	--------------------

### Characteristics

	Radial load
	Axial load in one direction
	Axial load in two directions
	Lifetime lubrication, freedom from maintenance
	Grease Lubrication
	Sealed on both sides