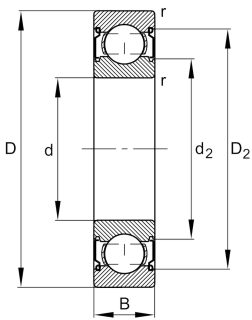


**FAG****629-C-2Z-L038>V**

Deep groove ball bearing

Deep groove ball bearing 62...-C-2Z, single row, Generation C, shields, steel sheet metal cage

Technical information



Your current product variant

Version code	>V	Not marked on bearing
Changed internal design	C	GenerationC
Sealing	2Z	Non-contact shield on both sides
Cage	JN	Steel sheet metal
Tolerance class	P6	Class 6 (ISO 492:2023)
Dimensional / heat stabilization	SN	Rings dimensional stabilized up to 120°
Lubricant	L038	Grease (L038/customer specific)
Radial internal clearance	CN (Group N)	Normal internal clearance
Bore type	Z	Cylindrical

Main Dimensions & Performance Data

d	9 mm	Bore diameter
D	26 mm	Outside diameter
B	8 mm	Width
C _r	5.300 N	Basic dynamic load rating, radial
C _{0r}	1.970 N	Basic static load rating, radial
C _{ur}	136 N	Fatigue load limit, radial
n _G	38.000 1/min	Limiting speed
n _{gr}	27.000 1/min	Reference speed
≈m	0,019 kg	Weight



Mounting dimensions

$d_{a \min}$	11,4 mm	Minimum diameter shaft shoulder
$D_{a \max}$	23,6 mm	Maximum diameter of housing shoulder
$r_{a \max}$	0,3 mm	Maximum fillet radius

Dimensions

r_{\min}	0,3 mm	Minimum chamfer dimension
D_1	21,34 mm	Shoulder diameter outer ring
D_2	23,09 mm	Caliber diameter outer ring
d_1	14,66 mm	Shoulder diameter inner ring
d_2	13,69 mm	Caliber diameter inner ring

Temperature range

T_{\min}	-20 °C	Operating temperature min.
T_{\max}	120 °C	Operating temperature max.

Calculation factors

f_0	12,4	Calculation factor
-------	------	--------------------

Characteristics

	Radial load
	Axial load in one direction
	Axial load in two directions
	Lifetime lubrication, freedom from maintenance
	Grease Lubrication
	Sealed on both sides