

**RTUE90-XL**

Take-up housing unit

Take-up housing units RTUE, cast iron housing, radial insert ball bearing with eccentric locking collar, R seals

X-life

Technical information

Your current product variant

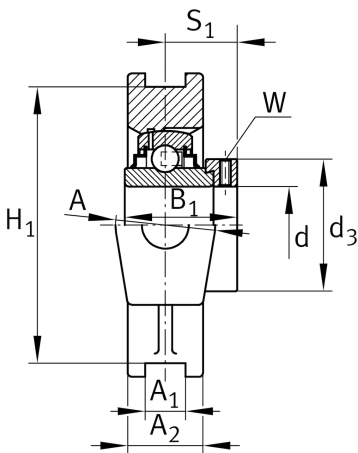
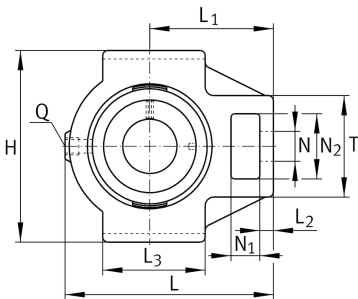
Material	GG	Grey cast iron
----------	----	----------------

Main Dimensions & Performance Data

d	90 mm	Bore diameter
H	215 mm	Height
L	275 mm	Length total
B ₁	69,5 mm	Locking collar total width
m	11,81 kg	Weight

Mounting dimensions

A ₁	28 mm	Width guidance groove
	H13	Width guidance groove clearance
H ₁	190 mm	Distance guidance grooves
	0,25 mm	Upper distance guidance groove tolerance
	-0,25 mm	Lower distance guidance groove tolerance
N	47 mm	Fixing bore





Dimensions

L ₁	170 mm	Distance shaft axis
L ₂	30 mm	Length fixed link
L ₃	140 mm	Length guidance groove
A	80 mm	Width housing fixing side
N ₁	40 mm	Width recess
N ₂	80 mm	Height recess
S ₁	46,5 mm	Distance of raceway to locking collar
T	130 mm	Height housing fixing side
Q	M6	Connection thread for lubrication
A ₂	55 mm	Width housing

Additional information

TUE18	Housing
GE90-XL-KRR-B	Bearing designation

Temperature range

T _{min}	-20 °C	Operating temperature min.
T _{max}	120 °C	Operating temperature max.