



FAG

SES618-318-L

Plummer block housing

Split plummer block housing for various bearing designs. The SNV series will be replaced by the new SES series in 2022.

Technical information

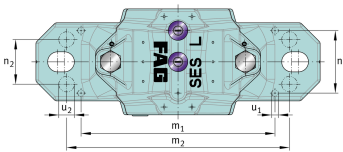
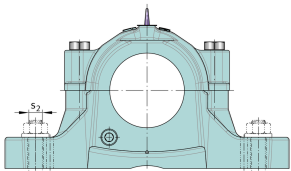
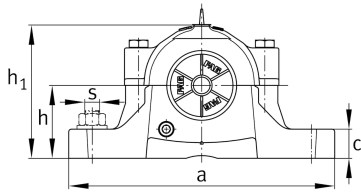


Main Dimensions & Performance Data

D	190 mm	Outside diameter bearing
a	380 mm	Length base
h ₁	229 mm	Height
g	155 mm	Width housing body
K	74 mm	Width bearing seat
≈m	19 kg	Weight



Dimensions



b	110 mm	Width base
c	40 mm	Height base
h	112 mm	Base to shaft centerline height
m	320 mm	Distance fixing bore
s	22,225 mm	Screw size
s	M24	Size of fixing screws
u	26 mm	Width slot
v	32 mm	Length slot
D ₂	120 mm	Diameter sealing
D ₃	128,5 mm	Diameter sealing groove
D ₅	125,7 mm	Outside diameter sealing labyrinth
g ₁	5 mm	Width sealing groove
g ₂	134,5 mm	Distance sealing
g ₃	15 mm	Wall thickness
g ₄	30,5 mm	Distance oil lubrication
m ₁	276 mm	Distance holes aligned pins m1
n ₃	99 mm	Distance lubrication
n ₄	139 mm	Distance lubrication sealing
u ₁	8 mm	Bore diameter u1
u ₂	18 mm	Bore diameter u2