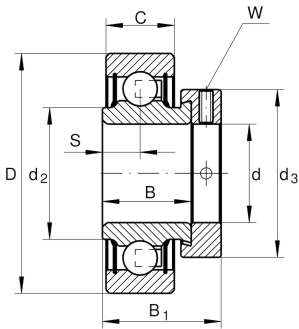
**RAE25-XL-NPP-FA106-L460** [↗](#)

Radial insert ball bearing

Radial insert ball bearing RAE...-XL-NPP

X-life

Technical information



Your current product variant

Lubricant	L460	Grease (L460)
-----------	------	---------------

Main Dimensions & Performance Data

d	25 mm	Bore diameter
D	52 mm	Outside diameter
B	21,4 mm	Width
B ₁	31 mm	Locking collar total width
C _r	14.000 N	Basic dynamic load rating, radial
C _{0r}	7.800 N	Basic static load rating, radial
C _{ur}	370 N	Fatigue load limit, radial
≈m	0,14 kg	Weight

Dimensions

C	15 mm	Width, outer ring
S	7,5 mm	Distance raceway
d ₂	30,3 mm	Rib diameter sealing inner ring
d ₃	37,5 mm	Outside diameter locking collar/locknut
W	3 mm	Width of flats



Temperature range

T_{\min}	-20 °C	Operating temperature min.
T_{\max}	120 °C	Operating temperature max.

Calculation factors

f_0	13,8	Calculation factor
-------	------	--------------------

Characteristics



Radial load



Axial load in one direction



Axial load in two directions



Lifetime lubrication, freedom from maintenance



Grease Lubrication



Sealed on both sides