



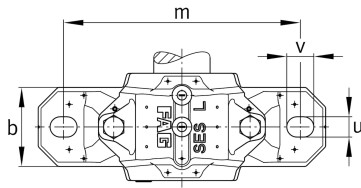
FAG

SES518-615-L

Plummer block housing

Split plummer block housing for various bearing designs. The SNV series will be replaced by the new SES series in 2022.

Technical information

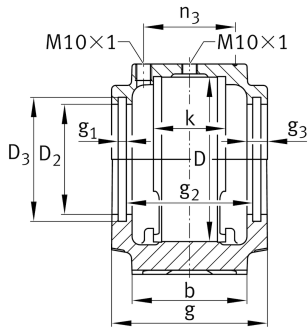
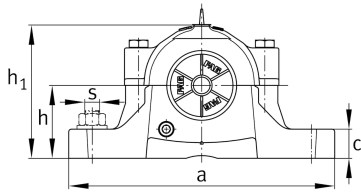


Main Dimensions & Performance Data

D	160 mm	Outside diameter bearing
a	345 mm	Length base
h ₁	194 mm	Height
g	140 mm	Width housing body
K	65 mm	Width bearing seat
≈m	12,9 kg	Weight



Dimensions



b	100 mm	Width base
c	35 mm	Height base
h	100 mm	Base to shaft centerline height
m	290 mm	Distance fixing bore
s	19,05 mm	Screw size
s	M20	Size of fixing screws
u	22 mm	Width slot
v	28 mm	Length slot
D ₂	102,5 mm	Diameter sealing
D ₃	111 mm	Diameter sealing groove
D ₅	108,7 mm	Outside diameter sealing labyrinth
g ₁	5 mm	Width sealing groove
g ₂	122 mm	Distance sealing
g ₃	13 mm	Wall thickness
g ₄	32 mm	Distance oil lubrication
m ₁	250 mm	Distance holes aligned pins m1
n ₃	80 mm	Distance lubrication
n ₄	126 mm	Distance lubrication sealing
u ₁	8 mm	Bore diameter u1
u ₂	18 mm	Bore diameter u2