

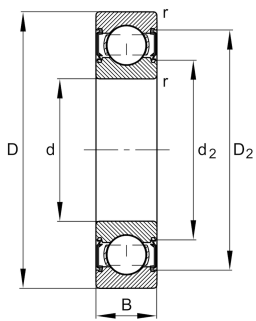
**FAG****6201-C-2HRS-NR-C3>V**

Deep groove ball bearing



Deep groove ball bearing 62...-C-2HRS-NR, single row, Generation C, seals, ring groove, snap ring, steel sheet metal cage

Technical information



Your current product variant

Version code	>V	Not marked on bearing
Changed internal design	C	GenerationC
Type of Sealing	2HRS	Contact seal on both sides
Design, bearing outer ring	NR	Ring groove for snap ring with snap ring
Cage	JN	Steel sheet metal
Tolerance class	P6	Class6 (P6), better then PN
Dimensional / heat stabilization	SN	Rings dimensional stabilized up to 120°
Lubricant	GA14	Ball bearing grease, low noise
Radial internal clearance	C3 (Group 3)	Internal clearance larger than CN
Bore type	Z	Cylindrical

Main Dimensions & Performance Data

d	12 mm	Bore diameter
D	32 mm	Outside diameter
B	10 mm	Width
C _r	8.000 N	Basic dynamic load rating, radial
C _{0r}	3.100 N	Basic static load rating, radial
C _{ur}	213 N	Fatigue load limit, radial
n _G	22.500 1/min	Limiting speed
≈m	0,037 kg	Weight



Mounting dimensions

$d_{a \min}$	16,2 mm	Minimum diameter shaft shoulder
$D_{a \max}$	27,8 mm	Maximum diameter of housing shoulder
$r_{a \max}$	0,6 mm	Maximum fillet radius

Dimensions

r_{\min}	0,6 mm	Minimum chamfer dimension
D_1	26 mm	Shoulder diameter outer ring
D_2	27,92 mm	Caliber diameter outer ring
d_1	18,31 mm	Shoulder diameter inner ring
d_2	17,34 mm	Caliber diameter inner ring

Temperature range

T_{\min}	-20 °C	Operating temperature min.
T_{\max}	100 °C	Operating temperature max.

Calculation factors

f_0	12,3	Calculation factor
-------	------	--------------------

Characteristics

	Radial load
	Axial load in one direction
	Axial load in two directions
	Lifetime lubrication, freedom from maintenance
	Grease Lubrication
	Sealed on both sides