

RWU25-E

Recirculating roller bearing carriage

Standard carriage with full complement recirculating roller system for linear recirculating roller bearing and guideway assembly, for oil or grease lubrication

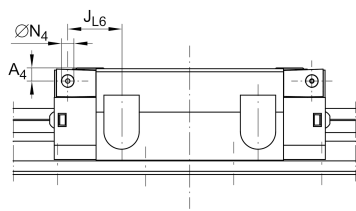
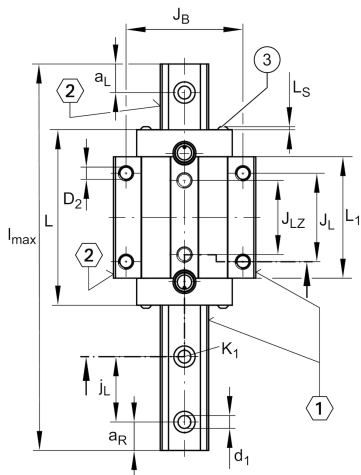
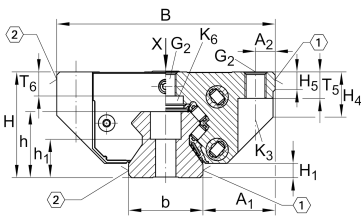
Technical information

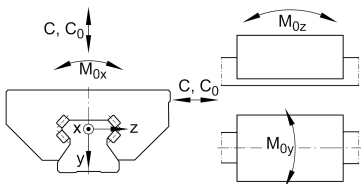
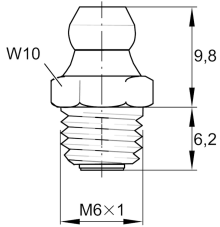
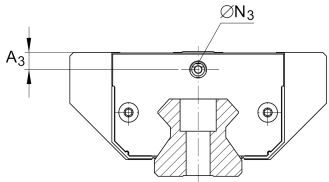
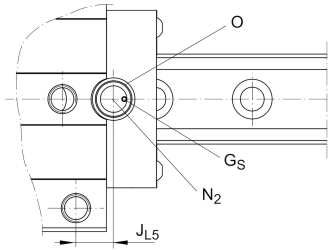
Your current product variant

Size code	25	
Version	E	Version
Carriage design	Standard	Standard carriage

Main Dimensions & Performance Data

H	36 mm	Height system
B	70 mm	Width carriage
L	91 mm	Overall length carriage
C	28.000 N	Dynamic load rating
C ₀	65.000 N	Dynamic load rating
M _{0x}	350 Nm	Static moment rating about X axis
M _{0y}	760 Nm	Static moment rating about Y axis
M _{0z}	680 Nm	Static moment rating about Z axis
m	0,68 kg	Weight





Mounting dimensions

A ₁	23,5 mm	Distance from locating edge on carriage to locating edge on guideway
J _B	57 mm	
b	23 mm	Width rail
A ₂	6,5 mm	Distance from locating edge to hole
L ₁	65,6 mm	
L _S	2,2 mm	
J _L	45 mm	
J _{LZ}	40 mm	
H ₁	6,5 mm	Free space, system dimension
H ₄	17,8 mm	
H ₅	5,25 mm	
T ₅	10 mm	Thread depth
T ₆	8,5 mm	
G ₂	M8	Fixing screws below (DIN ISO 4762-12.9)
G _{2 M_A}	24 Nm	Maximum tightening torque
K ₃	M6	Fixing screws below (DIN ISO 4762-12.9)
K _{3 M_A}	17 Nm	Maximum tightening torque
K ₆	M6	Fixing screws below (DIN 7984-8.8)
K _{6 M_A}	10 Nm	Maximum tightening torque
D ₂	6,7 mm	Bore diameter
A ₃	7,5 mm	Position lubrication connector
N ₃	M6	Lubrication connector
t _{N₃}	6 mm	Maximum permissible screw depth for lubrication connectors
N ₂	3 mm	Max. diameter of lubrication hole in adjacent construction
J _{L5}	14,5 mm	Position lubrication connector
G _S	M4x4	
O	10x1,5	O-Ring DIN 3771



View product details on medias

22.04.2026, 03:48:17 UTC

SCHAEFFLER

Additional information

VMKB_065

RWU

Material name