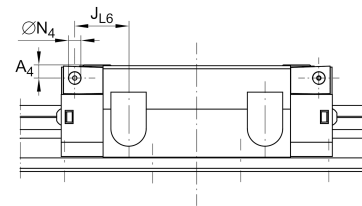
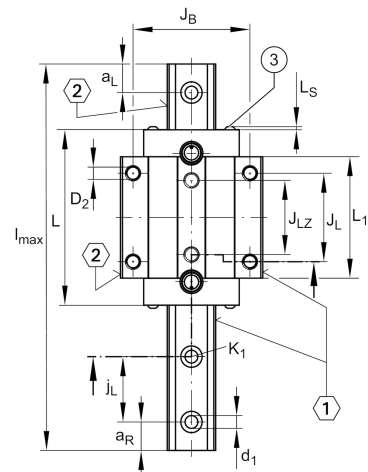
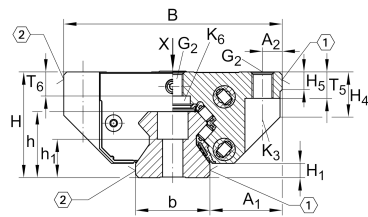
**RWU100-E-L**

Recirculating roller bearing carriage

Long carriage with full complement recirculating roller system for linear recirculating roller bearing and guideway assembly, for oil or grease lubrication

Technical information

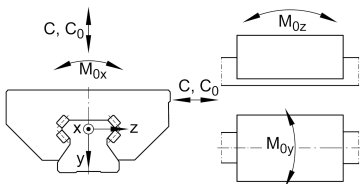
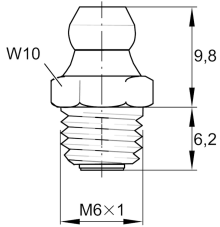
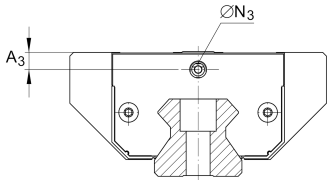
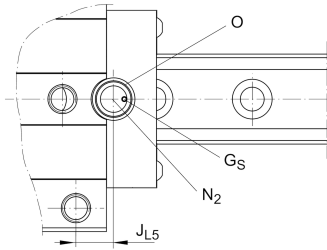


Your current product variant

Size code	100	
Version	E	Version
Carriage design	L	Long carriage

Main Dimensions & Performance Data

H	120 mm	Height system
B	250 mm	Width carriage
L	372,2 mm	Overall length carriage
C	630.000 N	Dynamic load rating
C ₀	1.490.000 N	Dynamic load rating
M _{0x}	33.780 Nm	Static moment rating about X axis
M _{0y}	80.250 Nm	Static moment rating about Y axis
M _{0z}	72.280 Nm	Static moment rating about Z axis
m	35,7 kg	Weight



Mounting dimensions

A ₁	75 mm	Distance from locating edge on carriage to locating edge on guideway
J _B	200 mm	
b	100 mm	Width rail
A ₂	25 mm	Distance from locating edge to hole
L ₁	306,5 mm	
L _S	3,3 mm	
J _L	230 mm	
H ₁	15 mm	Free space, system dimension
H ₄	52,5 mm	
H ₅	25 mm	
T ₅	29 mm	Thread depth
T ₆	26,6 mm	
G ₂	M20	Fixing screws below (DIN ISO 4762-12.9)
G _{2 M_A}	470 Nm	Maximum tightening torque
K ₃	M16	Fixing screws below (DIN ISO 4762-12.9)
K _{3 M_A}	340 Nm	Maximum tightening torque
K ₆	M16	Fixing screws below (DIN 7984-8.8)
K _{6 M_A}	220 Nm	Maximum tightening torque
D ₂	17,5 mm	Bore diameter
A ₃	10,6 mm	Position lubrication connector
N ₃	M6	Lubrication connector
t _{N₃}	6 mm	Maximum permissible screw depth for lubrication connectors
A ₄	10,6 mm	Position lubrication connector
N ₄	5,6 mm	Lubrication connector
t _{N₄}	6 mm	Maximum permissible screw depth for lubrication connectors
J _{L6}	65,1 mm	Position lubrication connector
N ₂	6 mm	Max. diameter of lubrication hole in adjacent construction

The data sheet only contains an overview of the technical data of the selected product. Please refer to the additional documentation for this product. For further information, please use the following link on our website: [Contact form](#)



View product details on medias

17.04.2026, 00:03:41 UTC

SCHAEFFLER

Additional information

VMKB_065

RWU

Material name